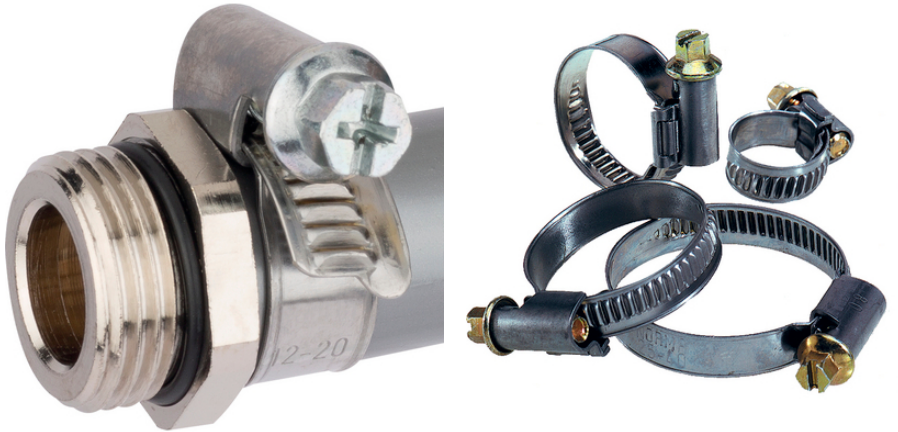


SILVYN® SCH

SILVYN® SCH - cable clamps



Optimum strain relief

Benefits

Ensures the tensile strength
Clamps various conduit sizes with one clamp

Application range

In combination with:
SILVYN® SSV-M/SSVZ-M
SILVYN® SSV/SSV-Z

Product features

Variable clamping range

Product Make-up

Galvanized steel ring
Worm gear drive

Technical Data

Classification ETIM 5:

ETIM 5.0 Class-ID: EC000127
ETIM 5.0 Class-Description: Fixing clip

Classification ETIM 6:

ETIM 6.0 Class-ID: EC000127
ETIM 6.0 Class-Description: Saddle

Material:

Steel, galvanized

Note

Photographs and graphics are not to scale and do not represent detailed images of the respective products.
Prices are net prices without VAT and surcharges. Sale to business customers only.

Last Update (26.05.2024)

©2024 Lapp Group - Technical changes reserved

Product Management www.lappkabel.de

You can find the current technical data in the corresponding data sheet.

PN 0456 / 02_03.16

SILVYN® SCH

Article number	Article designation	Clamping range in mm	Suitable for SILVYN® SI	Suitable for SILVYN® SP/SP-PU	Pieces / PU
SILVYN® SCH					
52003130	10 - 16 S	10.0 - 16.0	7 x 9 / 9 x 12 / 11 x 14	10 x 14	100
52003140	12 - 20 S	12.0 - 20.0	13 x 16 / 14 x 18	12 x 16	100
52003160	16 - 25 S	16.0 - 25.0	18 x 22	16 x 20	100
52003170	20 - 32 S	20.0 - 32.0	23 x 28	22 x 27	100
52009050	25 - 40 S	25.0 - 40.0	23 x 28 / 32 x 38	30 x 36	100
52009061	35 - 50 S	35.0 - 50.0	32 x 38	38 x 44	50
52009040	40 - 60 S	40.0 - 60.0	-	45 x 51 / 50 x 56	25

Last Update (26.05.2024)

©2024 Lapp Group - Technical changes reserved

Product Management www.lappkabel.deYou can find the current technical data in the corresponding data sheet.
PN 0456 / 02_03_16