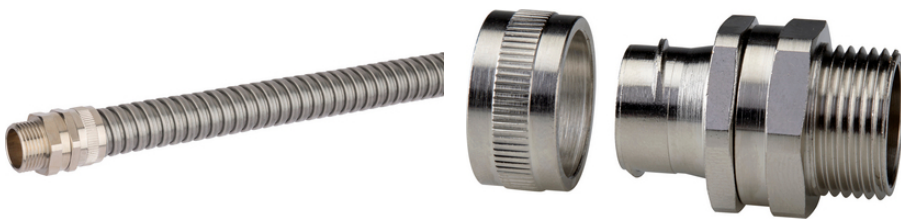


SILVYN® LGES-M

SILVYN® LGES-M is a swivelling metric threaded stainless steel conduit fitting for applications with torsional movement

Info

Swivelling upper part with integrated inner sleeve



Heat-resistant



Cold-resistant



Corrosion-resistant



Mechanical resistance



Space requirement



Robust

Benefits

For rotating applications

High tensile strength

Space-saving

Application range

In combination with protective conduit:

SILVYN® SSU / SSUE

Applications with high mechanical stress

SILVYN® LGES-M

Product Make-up

Metric connection thread
Hexagonal collar with torsion element
Cap nut

Technical Data

Classification ETIM 5:	ETIM 5.0 Class-ID: EC001180 ETIM 5.0 Class-Description: Screw connection for protective metallic hose
Classification ETIM 6:	ETIM 6.0 Class-ID: EC001180 ETIM 6.0 Class-Description: Screw connection for protective metallic hose
Certifications:	IEC EN 61386-23
Material:	Nickel-plated brass Stainless steel AISI 316
Protection rating:	IP 40
Temperature range:	-100°C to +400°C

Note

Photographs and graphics are not to scale and do not represent detailed images of the respective products.
Prices are net prices without VAT and surcharges. Sale to business customers only.

SILVYN® LGES-M

Article number	Metric size	SW wrench size mm	Overall length mm	Thread length mm	Suitable for SILVYN® SSU / SSUE	Pieces / PU
SILVYN® LGES-M (Nickel plated brass)						
55503489	12 x 1.5	13	30	8	10	10
55503490	16 x 1.5	17	32.2	8	12	10
55503491	16 x 1.5	20	34.2	10	16	10
55503492	20 x 1.5	22	34.2	10	16	10
55503493	20 x 1.5	24	35.5	10	20	10
55503494	25 x 1.5	29	43.7	12	25	10
55503495	32 x 1.5	37	48	13	32	2
55503496	40 x 1.5	48	51.2	14	40	2
55503497	50 x 1.5	58	54.2	15	50	1
55503498	63 x 1.5	70	63.2	18	63	1
SILVYN® LGES-M (Stainless steel)						
55503210	12 x 1.5	14	30.2	8	10	1
55503211	16 x 1.5	19	35.5	8	12	1
55503212	16 x 1.5	19	35.5	10	16	1
55503213	20 x 1.5	24	38.5	10	20	1
55503214	25 x 1.5	29	41.5	10	25	1
55503215	32 x 1.5	38	49	13	32	1

Last Update (23.04.2024)

©2024 Lapp Group - Technical changes reserved

 Product Management www.lappkabel.de

 You can find the current technical data in the corresponding data sheet.
 PN 0456 / 02_03_16