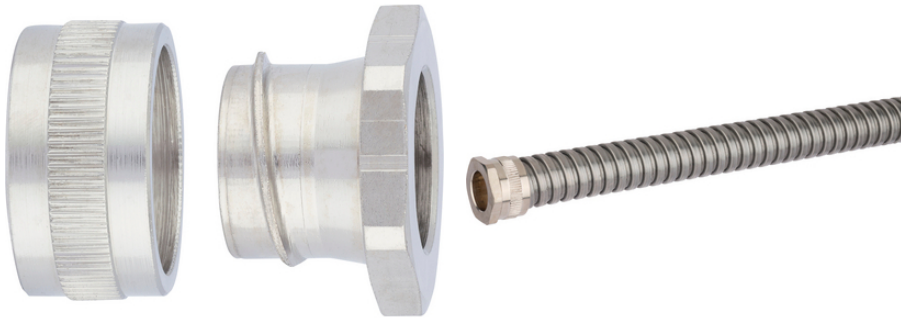


## SILVYN® LGEP

SILVYN® LGEP is a nickel-plated brass conduit insert

### Info

Ensuring cables do not get damaged



### Benefits

Cable damage can be prevented  
High tensile strength  
Space-saving

### Application range

In combination with protective conduit:  
SILVYN® SSU / SSUE  
Conduit end cover  
If no conduit fitting is used  
Applications with high mechanical stress

### Technical Data

Classification ETIM 5:

ETIM 5.0 Class-ID: EC001180

ETIM 5.0 Class-Description: Screw connection for protective metallic hose

Classification ETIM 6:

ETIM 6.0 Class-ID: EC001180

ETIM 6.0 Class-Description: Screw connection for protective metallic hose

Certifications:

IEC EN 61386-23

Material:

Nickel-plated brass

Protection rating:

IP 40

Temperature range:

-50°C to +300°C

### Note

Photographs and graphics are not to scale and do not represent detailed images of the respective products.  
Prices are net prices without VAT and surcharges. Sale to business customers only.

**SILVYN® LGEP**

Article number	Nominal size	Suitable for SILVYN® SSU / SSUE	Pieces / PU
SILVYN® LGEP			
55503179	10	10	10
55503180	12	13	10
55503181	16	16	10
55503182	20	20	10
55503183	25	25	10
55503184	32	32	10
55503185	40	40	4
55503186	50	50	4
55503187	63	63	1
55503188	75	75	1

Last Update (25.04.2024)

©2024 Lapp Group - Technical changes reserved

Product Management [www.lappkabel.de](http://www.lappkabel.de)

You can find the current technical data in the corresponding data sheet.

PN 0456 / 02\_03.16