

EPIC® STA 6 Solder termination

The proven STA inserts with spring contacts

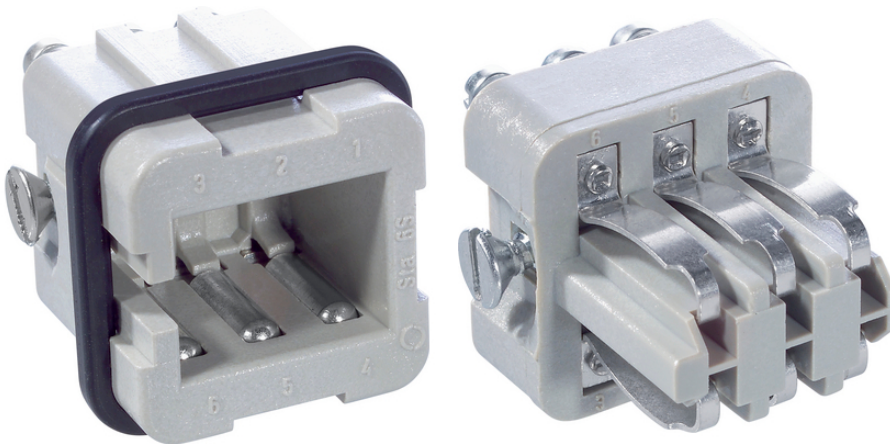
The insert with solder termination is ideal for use in electronic laboratories or control systems. The temperature range is from -40 to +80 degrees.

Info

For reliable signal transmission in harsh environmental conditions

Mechanically robust spring contacts

Made in Germany



Mechanical and plant engineering

Benefits

good contact due to the strong contact springs.

The proven STA inserts with spring contacts

Application range

Control systems

Rack technology

Electronic laboratory

Technical Data

Classification ETIM 5:

ETIM 5.0 Class-ID: EC000438

ETIM 5.0 Class-Description: Contact insert for industrial connectors

Classification ETIM 6:

ETIM 6.0 Class-ID: EC000438

ETIM 6.0 Class-Description: Contact insert for industrial connectors

Rated voltage (V):

IEC: 24 V AC, 60 V DC

UL: 48 V

CSA: 48 V

Rated current (A):

IEC: 10 A

Last Update (22.02.2024)

©2024 Lapp Group - Technical changes reserved

Product Management www.lappkabel.de

You can find the current technical data in the corresponding data sheet.

PN 0456 / 02_03.16

EPIC® STA 6 Solder termination

| | |
|--------------------------------|---|
| | UL: 10 A |
| | CSA: 10 A |
| Pollution degree: | 2 |
| Contact resistance: | < 3 mOhm |
| Contacts: | Copper alloy, tinned |
| Number of contacts: | 6 |
| Termination methods: | Solder termination: up to 1.5 mm ² |
| Stripping length (mm): | 5 |
| Cycle of mechanical operation: | 100 |
| VDE-tested: | UL-tested: UL File Number: E75770 |
| Temperature range: | -40 °C up to +80 °C |

Note

Photographs and graphics are not to scale and do not represent detailed images of the respective products.
Prices are net prices without VAT and surcharges. Sale to business customers only.

EPIC® STA 6 Solder termination

| Article number | Article description | Contact type | Number of operating contacts | Pieces / PU |
|--------------------------|---------------------|--------------|------------------------------|-------------|
| STA 6 solder termination | | | | |
| 10485200 | STA 6 SL | male | 1 - 6 | 10 |
| 10487200 | STA 6 FL | Spring | 1 - 6 | 10 |