

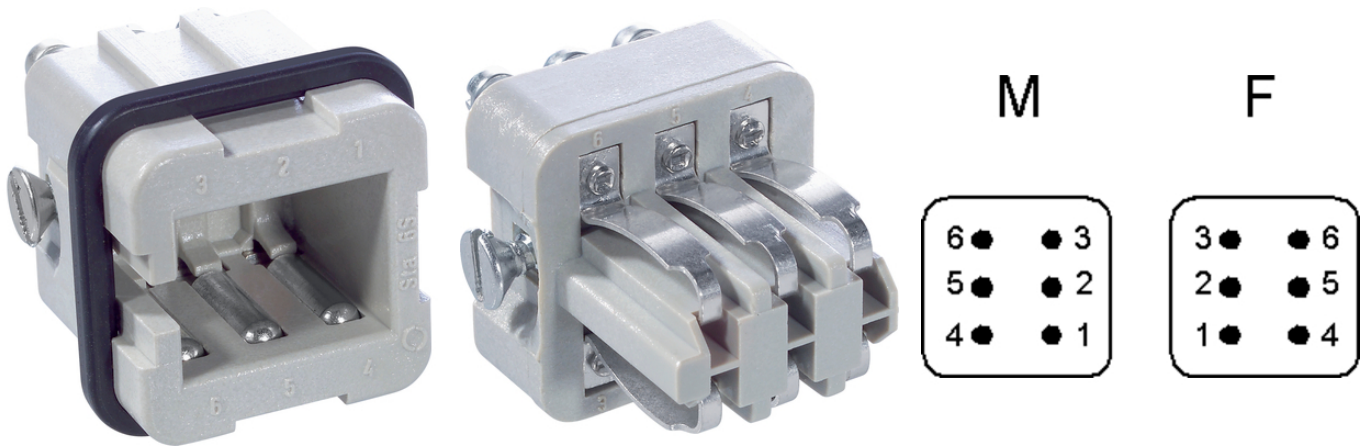
EPIC® STA 6 Solder termination

The proven STA inserts with spring contacts

The insert with solder termination is ideal for use in electronic laboratories or control systems. The temperature range is from -40 to +80 degrees.

Info

For reliable signal transmission in harsh environmental conditions
Mechanically robust spring contacts



Mechanical and plant engineering

Benefits

good contact due to the strong contact springs.
The proven STA inserts with spring contacts

Application range

Control systems
Rack technology
Electronic laboratory

Technical Data

Classification ETIM 5:

ETIM 5.0 Class-ID: EC000438

ETIM 5.0 Class-Description: Contact insert for industrial connectors

Classification ETIM 6:

ETIM 6.0 Class-ID: EC000438

ETIM 6.0 Class-Description: Contact insert for industrial connectors

Rated voltage (V):

IEC: 24 V AC, 60 V DC

UL: 48 V

CSA: 48 V

Rated current (A):

IEC: 10 A

Last Update (02.08.2019)

©2019 Lapp Group - Technical changes reserved

Product Management www.lappkabel.de

You can find the current technical data in the corresponding data sheet.

PN 0456 / 02_03.16

EPIC® STA 6 Solder termination

	UL: 10 A
	CSA: 10 A
Pollution degree:	2
Contact resistance:	< 3 mOhm
Contacts:	Copper alloy, tinned
Number of contacts:	6
Termination methods:	Solder termination: up to 1.5 mm ²
Stripping length (mm):	5
Cycle of mechanical operation:	100
VDE-tested:	UL-tested: UL File Number: E75770
Temperature range:	-40°C up to +80°C

Note

Photographs and graphics are not to scale and do not represent detailed images of the respective products. Prices are net prices without VAT and surcharges. Sale to business customers only.

EPIC® STA 6 Solder termination

Article number	Article description	Contact type	Number of operating contacts	Pieces / PU
STA 6 solder termination				
10485200	STA 6 SL	male	1 - 6	10
10487200	STA 6 FL	Spring	1 - 6	10

Last Update (02.08.2019)

©2019 Lapp Group - Technical changes reserved

Product Management www.lappkabel.de

You can find the current technical data in the corresponding data sheet.

PN 0456 / 02_03.16

EPIC® STA 6 Solder termination

