

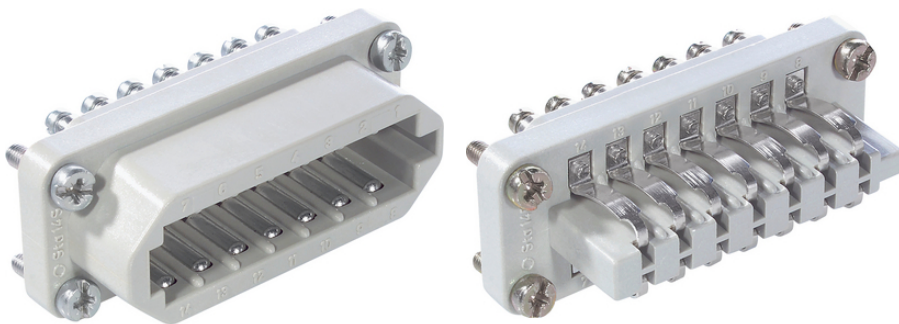
## EPIC® STA 14 Screw termination

The proven STA inserts with spring contacts

The insert with screw termination is a tried-and-tested product for control cabinets and control systems and has strong contact springs.

### Info

For reliable signal transmission in harsh environmental conditions  
 Mechanically robust spring contacts  
 Made in Germany



Mechanical and plant engineering

### Benefits

good contact due to the strong contact springs.  
 The proven STA inserts with spring contacts

### Application range

Control systems  
 Rack technology  
 Electronic laboratory

### Technical Data

Classification ETIM 5:

ETIM 5.0 Class-ID: EC000438

ETIM 5.0 Class-Description: Contact insert for industrial connectors

Classification ETIM 6:

ETIM 6.0 Class-ID: EC000438

ETIM 6.0 Class-Description: Contact insert for industrial connectors

Rated voltage (V):

IEC: 24 V AC, 60 V DC

UL: 48 V

CSA: 48 V

Rated current (A):

IEC: 7.5 A

Last Update (16.07.2024)

©2024 Lapp Group - Technical changes reserved

Product Management [www.lappkabel.de](http://www.lappkabel.de)

You can find the current technical data in the corresponding data sheet.

PN 0456 / 02\_03.16

## EPIC® STA 14 Screw termination

	UL: 7.5 A
	CSA: 7.5 A
Pollution degree:	2
Contact resistance:	< 3 mOhm
Contacts:	Copper alloy, tinned
Number of contacts:	14
Termination methods:	Screw termination: 0.5 - 1.5 mm <sup>2</sup>
Stripping length (mm):	5
Cycle of mechanical operation:	100
VDE-tested:	UL-tested:
	UL File Number: E75770
Temperature range:	-40°C up to +80°C

### Note

Photographs and graphics are not to scale and do not represent detailed images of the respective products. Prices are net prices without VAT and surcharges. Sale to business customers only.

## EPIC® STA 14 Screw termination

Article number	Article description	Contact type	Number of operating contacts	Packaging unit
STA 14 screw termination				
10491100	STA 14 SS	male	1 - 14	5
10493100	STA 14 FS	Spring	1 - 14	5

Last Update (16.07.2024)

©2024 Lapp Group - Technical changes reserved

Product Management [www.lappkabel.de](http://www.lappkabel.de)

You can find the current technical data in the corresponding data sheet.

PN 0456 / 02\_03.16