

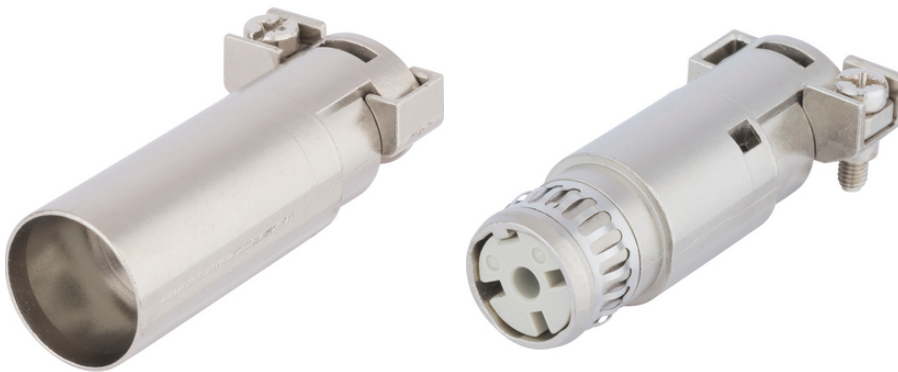
EPIC® MH Coax 1.6mm

The mixed assembly guarantees high flexibility. For applications in machine and plant engineering, for robotics and slide-in technology.

EPIC® MH Coax, 1-pole module with shielding, robust EPIC® H-D contacts with 1.6mm diameter for the transmission of signals with EMC protection

Info

Modular connector system, mateable with the market standard
Shielded modul for data and signal transmission.



Supplementary automation components from Lapp



Mechanical and plant engineering



Rail



Wind Energy



Interference signals

Benefits

Shielded modul for data and signal transmission.

Modular connector system, plugable with the market standard

Crimp connection for permanent vibration proof contacting

Railway applications

- Fire protection on railway vehicles: Test according EN 45545-2. Requirement sets R22 and R23. Hazard level HL1, HL2 and HL3

The mix of different functions in one plug guarantees high flexibility

Application range

Mechanical engineering

Last Update (28.05.2023)

©2023 Lapp Group - Technical changes reserved

Product Management www.lappkabel.de

You can find the current technical data in the corresponding data sheet.

PN 0456 / 02_03.16

EPIC® MH Coax 1.6mm

Robotics industry
Plant engineering
Renewable energy
Railway applications / vehicle construction

Technical Data

Classification ETIM 5:	ETIM 5.0 Class-ID: EC002641 ETIM 5.0 Class-Description: Modular connector (industrial connector)
Classification ETIM 6:	ETIM 6.0 Class-ID: EC002641 ETIM 6.0 Class-Description: Modular connector (industrial connector)
Rated voltage (V):	50
Rated impulse voltage:	0,8 kV
Rated current (A):	16
Pollution degree:	3
Flammability:	UL94 V-0
Number of contacts:	1
Cycle of mechanical operation:	500
Certifications:	UL-tested: UL File Number: E75770
Temperature range:	-40°C to +125°C

Note

Photographs and graphics are not to scale and do not represent detailed images of the respective products.
Prices are net prices without VAT and surcharges. Sale to business customers only.

EPIC® MH Coax 1.6mm

Article number	Article description	Contact type	Number of operating contacts	Pieces / PU
44423260	EPIC® MHS Coax D=1.6mm	male	1	10
44423261	EPIC® MHB Coax D=1.6mm	female	1	10

Last Update (28.05.2023)

©2023 Lapp Group - Technical changes reserved

Product Management www.lappkabel.de

You can find the current technical data in the corresponding data sheet.

PN 0456 / 02_03_16