

EPIC® MH 6

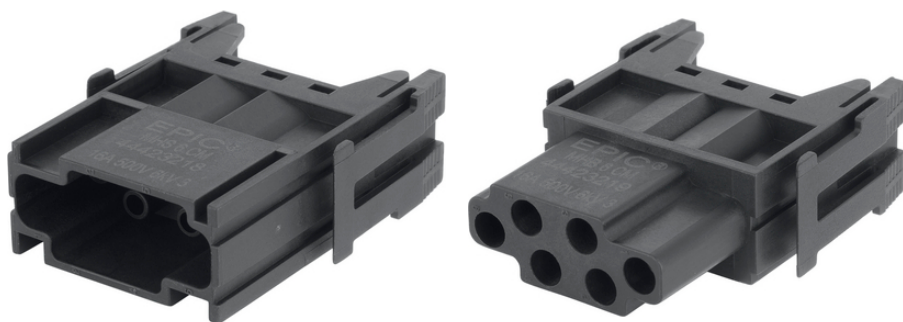
High flexibility by the use of any combination of inserts in one connector

High flexibility by the use of any combination of modules in one connector

Info

Modular connector system, plugable with the market standard

Module 6 pole for control signals



Supplementary automation components from Lapp



Mechanical and plant engineering



Rail



Wind Energy



Flame-retardant



Voltage

Benefits

Module 6 pole for control signals

Crimp connection for permanent vibration proof contacting

EPIC® MH system is mateable with the market standard

The mix of different functions in one plug guarantees high flexibility

Railway applications

- Fire protection on railway vehicles: Test according EN 45545-2. Requirement sets R22 and R23. Hazard level HL1, HL2 and HL3

Application range

Last Update (25.04.2024)

©2024 Lapp Group - Technical changes reserved

Product Management www.lappkabel.de

You can find the current technical data in the corresponding data sheet.

PN 0456 / 02_03.16

EPIC® MH 6

Mechanical engineering
Robotics industry
Plant engineering
Renewable energy
Railway applications / vehicle construction

Technical Data

| | |
|--------------------------------|---|
| Classification ETIM 5: | ETIM 5.0 Class-ID: EC002641 ETIM 5.0 Class-Description: Modular connector (industrial connector) |
| Classification ETIM 6: | ETIM 6.0 Class-ID: EC002641 ETIM 6.0 Class-Description: Modular connector (industrial connector) |
| Rated voltage (V): | 500 |
| Rated impulse voltage: | 6 kV |
| Rated current (A): | 16 A |
| Pollution degree: | 3 |
| Flammability: | UL94 V-0 |
| Contact resistance: | < 5 mOhm |
| Number of contacts: | 6 |
| Termination methods: | Crimp termination |
| Material: | Polyamide, glass fibre-reinforced |
| Cycle of mechanical operation: | 500 |
| Certifications: | UL-tested: UL File Number: E75770 |
| Temperature range: | -40 °C to +125 °C |

Note

Photographs and graphics are not to scale and do not represent detailed images of the respective products.
Prices are net prices without VAT and surcharges. Sale to business customers only.

EPIC® MH 6

| Article number | Article description | Contact type | Number of operating contacts | Slots | Pieces / PU |
|----------------|---------------------|--------------|------------------------------|-------|-------------|
| 44423218 | EPIC® MHS 6 CM | male | 6 | 1 | 10 |
| 44423219 | EPIC® MHB 6 CM | female | 6 | 1 | 10 |