

EPIC® MCR 6

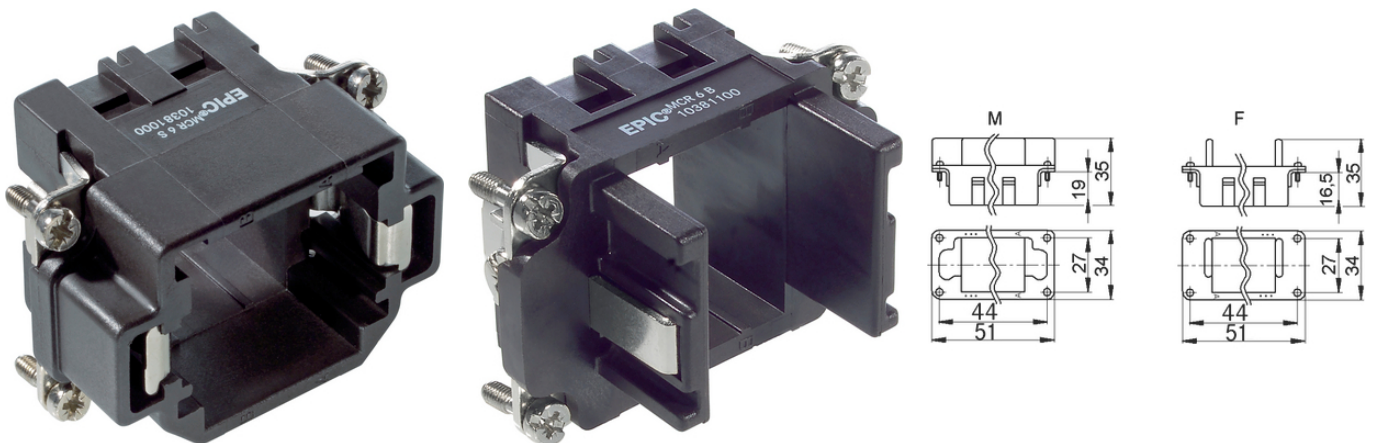
The mixed assembly guarantees high flexibility. For applications in machine and plant engineering, for robotics and slide-in technology.

The various types of module frame system can be used together in one housing. The pin frames always have to be used with male pin contacts.

Info

Frame system for modules

Various functions can be used together in one connector



Supplementary automation components from Lapp



Mechanical and plant engineering



Wind Energy

Benefits

The mix of different functions in one plug guarantees high flexibility

Assembly of individual connectors, suitable for different applications

Product features

The MCR "male" frame version is designed for use with modules with male contacts; the "female" version is designed for use with modules with female contacts

Technical Data

Classification ETIM 5:

ETIM 5.0 Class-ID: EC002310

ETIM 5.0 Class-Description: Fixing frame industrial connectors

Classification ETIM 6:

ETIM 6.0 Class-ID: EC002310

ETIM 6.0 Class-Description: Fixing frame industrial connectors

VDE-tested:

Certified production control: VDE-REG. no. A870

Last Update (23.04.2024)

©2024 Lapp Group - Technical changes reserved

Product Management www.lappkabel.de

You can find the current technical data in the corresponding data sheet.

PN 0456 / 02_03.16

EPIC® MCR 6

UL-tested:
UL File Number: E75770

Note

Photographs and graphics are not to scale and do not represent detailed images of the respective products.
Prices are net prices without VAT and surcharges. Sale to business customers only.



EPIC® MCR 6

Article number	Article	Slots	Version	Pieces / PU
MCR 6 frame				
10381000	MCR 6 S	2	male	5
10381100	MCR 6 B	2	female	5

Last Update (23.04.2024)

©2024 Lapp Group - Technical changes reserved

Product Management www.lappkabel.de

You can find the current technical data in the corresponding data sheet.

PN 0456 / 02_03_16