

## EPIC® MCR 6

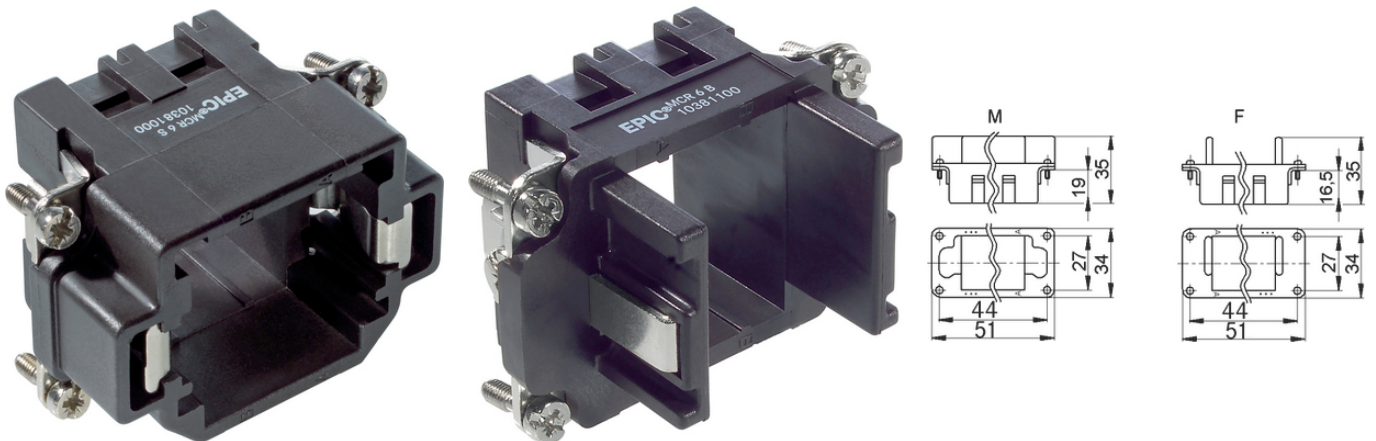
The mixed assembly guarantees high flexibility. For applications in machine and plant engineering, for robotics and slide-in technology.

The various types of module frame system can be used together in one housing. The pin frames always have to be used with male pin contacts.

### Info

Frame system for modules

Various functions can be used together in one connector



Supplementary automation components from Lapp



Mechanical and plant engineering



Wind Energy

### Benefits

The mix of different functions in one plug guarantees high flexibility

Assembly of individual connectors, suitable for different applications

### Product features

The MCR "male" frame version is designed for use with modules with male contacts; the "female" version is designed for use with modules with female contacts

### Technical Data

Classification ETIM 5:

ETIM 5.0 Class-ID: EC002310

ETIM 5.0 Class-Description: Fixing frame industrial connectors

Classification ETIM 6:

ETIM 6.0 Class-ID: EC002310

ETIM 6.0 Class-Description: Fixing frame industrial connectors

VDE-tested:

Certified production control: VDE-REG. no. A870

Last Update (10.01.2024)

©2024 Lapp Group - Technical changes reserved

Product Management [www.lappkabel.de](http://www.lappkabel.de)

You can find the current technical data in the corresponding data sheet.

PN 0456 / 02\_03.16

**EPIC® MCR 6**

UL-tested:  
UL File Number: E75770

**Note**

Photographs and graphics are not to scale and do not represent detailed images of the respective products.  
Prices are net prices without VAT and surcharges. Sale to business customers only.

**EPIC® MCR 6**

Article number	Article	Slots	Version	Pieces / PU
MCR 6 frame				
10381000	MCR 6 S	2	male	5
10381100	MCR 6 B	2	female	5