

EPIC® MCR 16

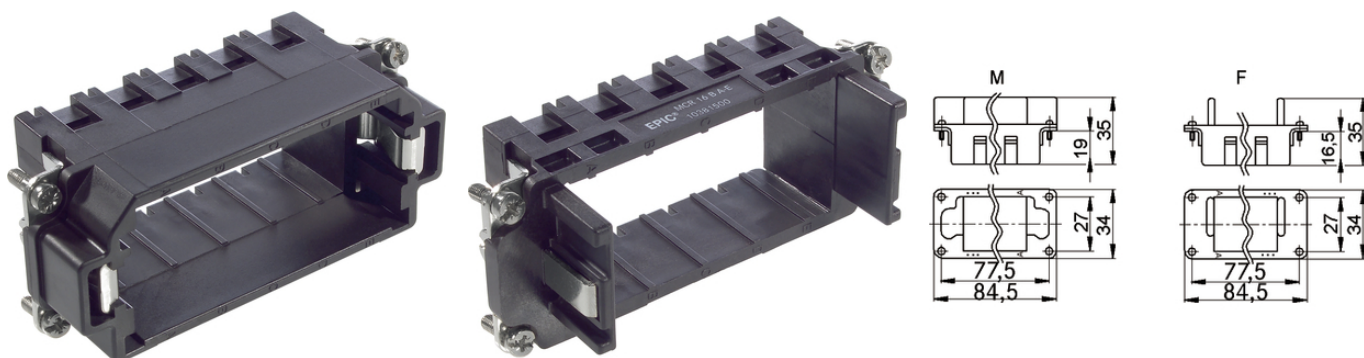
The mixed assembly guarantees high flexibility. For applications in mechanical and plant engineering, for printing machines and slide-in technology.

The frame systems enable to use various modules together in one housing, only the combination of pin frame and male pin contact.

Info

Frame system for modules

Various functions can be used together in one connector



Wind Energy



Mechanical and plant engineering



Kompletterande automationskomponenter från Lapp

Benefits

The mix of different functions in one plug guarantees high flexibility

Assembly of individual connectors, suitable for different applications

Product features

The MCR "male" frame version is designed for use with modules with male contacts; the "female" version is designed for use with modules with female contacts

Technical Data

Classification ETIM 5:

ETIM 5.0 Class-ID: EC002310

ETIM 5.0 Class-Description: Fixing frame industrial connectors

Classification ETIM 6:

ETIM 6.0 Class-ID: EC002310

ETIM 6.0 Class-Description: Fixing frame industrial connectors

VDE-tested:

Certified production control: VDE-REG. no. A870

UL-tested:

Last Update (24.04.2024)

©2024 Lapp Group - Technical changes reserved

Product Management www.lappkabel.de

You can find the current technical data in the corresponding data sheet.

PN 0456 / 02_03.16

EPIC® MCR 16

UL File Number: E75770

Note

Photographs and graphics are not to scale and do not represent detailed images of the respective products.
Prices are net prices without VAT and surcharges. Sale to business customers only.

EPIC® MCR 16

Article number	Article	Slots	Version
MCR 16 frame			
10381400	MCR 16 S	5	male
10381500	MCR 16 B	5	female