

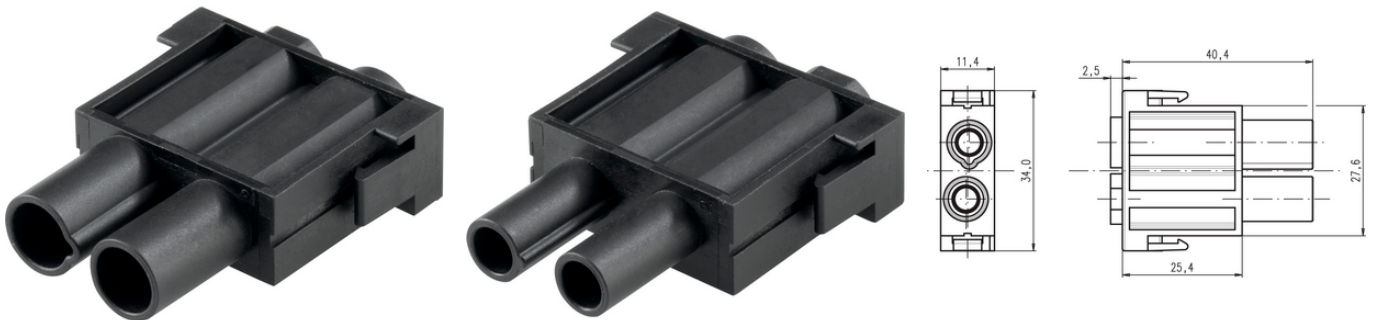
## Power module: HC2

The mixed assembly guarantees high flexibility. For applications in machine and plant engineering, for robotics and slide-in technology.

The power module ensures a high current in one modular slot and combines a greater number of functions. It is suitable for robotics and control systems.

### Info

High current with only one module slot



Supplementary automation components from Lapp



Mechanical and plant engineering



Wind Energy

### Benefits

High current transfer

The mix of different functions in one plug guarantees high flexibility

Crimp connection for permanent vibration proof contacting

### Application range

Industrial machinery and plant engineering

Robotics industry

Control engineering

Renewable energy

### Technical Data

Classification ETIM 5:

ETIM 5.0 Class-ID: EC002641

ETIM 5.0 Class-Description: Modular connector (industrial connector)

Classification ETIM 6:

ETIM 6.0 Class-ID: EC002641

ETIM 6.0 Class-Description: Modular connector (industrial connector)

Rated voltage (V):

1000

Last Update (16.07.2024)

©2024 Lapp Group - Technical changes reserved

Product Management [www.lappkabel.de](http://www.lappkabel.de)

You can find the current technical data in the corresponding data sheet.

PN 0456 / 02\_03.16

## Power module: HC2

Rated impulse voltage:	8 kV
Rated current (A):	65
Pollution degree:	3
Number of contacts:	2
Termination methods:	Crimp termination: 16.0 mm <sup>2</sup>
Material:	PA6
Cycle of mechanical operation:	500
Temperature range:	-40 °C to +125 °C

### Note

PE connection with a 16mm<sup>2</sup> wire only with the recommended ring lug 44424029

The inserts must be used with the appropriate housings

Photographs and graphics are not to scale and do not represent detailed images of the respective products.

Prices are net prices without VAT and surcharges. Sale to business customers only.

**Power module: HC2**

Article number	Article description	Contact type	Slots	Packaging unit
Power module: HC2				
44424012	EPIC® MCS HC2	male	1	10
44424013	EPIC® MCB HC2	female	1	10

Last Update (16.07.2024)

©2024 Lapp Group - Technical changes reserved

Product Management [www.lappkabel.de](http://www.lappkabel.de)

You can find the current technical data in the corresponding data sheet.

PN 0456 / 02\_03\_16

## Power module: HC2

