

## EPIC® MC Module: Universal Bus

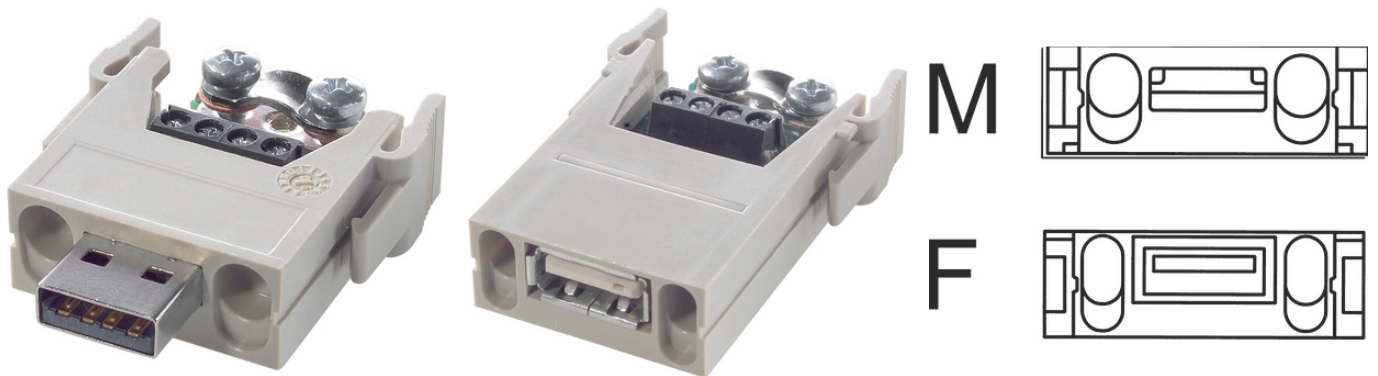
The mixed assembly guarantees high flexibility. For applications in machine and plant engineering, for robotics and slide-in technology.

The universal Bus module has screw termination and is suitable for use in control systems and lighting and sound systems.

### Info

Connector for shielded data cables

Lever for rapid removal of the module



Supplementary automation components from Lapp



Mechanical and plant engineering



Wind Energy

### Benefits

The mix of different functions in one plug guarantees high flexibility

Assembly of individual connectors, suitable for different applications

### Application range

Plant engineering

Light & sound technology

Control engineering

### Technical Data

Classification ETIM 5:

ETIM 5.0 Class-ID: EC002641

ETIM 5.0 Class-Description: Modular connector (industrial connector)

Classification ETIM 6:

ETIM 6.0 Class-ID: EC002641

ETIM 6.0 Class-Description: Modular connector (industrial connector)

Rated voltage (V):

30 V

Rated current (A):

1 A

Last Update (24.04.2024)

©2024 Lapp Group - Technical changes reserved

Product Management [www.lappkabel.de](http://www.lappkabel.de)

You can find the current technical data in the corresponding data sheet.

PN 0456 / 02\_03.16

## EPIC® MC Module: Universal Bus

Pollution degree:	3
Contacts:	Copper alloy, gold-plated
Number of contacts:	4 + shield
Termination methods:	Screw termination: 0.08 - 1.5 mm <sup>2</sup>
Cycle of mechanical operation:	100
Temperature range:	-20 °C ... +85 °C

### Note

Photographs and graphics are not to scale and do not represent detailed images of the respective products. Prices are net prices without VAT and surcharges. Sale to business customers only.

**EPIC® MC Module: Universal Bus**

Article number	Article description	Contact type	Number of operating contacts	Slots	Pieces / PU
Module: Universal Bus					
10390600	EPIC® MCS 4 SS	male	4 + shield	1	5
10390700	EPIC® MCS 4 BS	female	4 + shield	1	5