

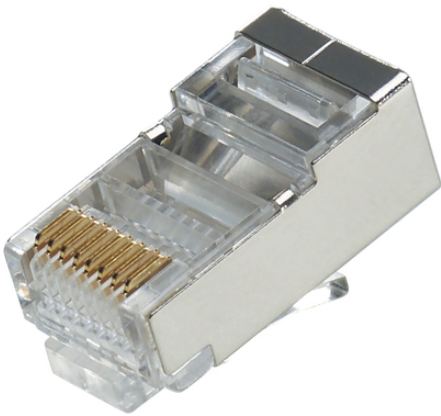
EPIC® CE6326 Connector RJ45

The mixed assembly guarantees high flexibility. For applications in mechanical and plant engineering, for printing machines and slide-in technology.

The modular connector can be ideally combined with the 4-pair flexible ETHERLINE Cat. 5e cable and can be used, for example, in investment construction.

Info

RJ45 connector suitable for RJ45 module



Supplementary automation components from Lapp



Mechanical and plant engineering



Wind Energy

Benefits

RJ45 connector for use in the module MCS 8 RJ45

Application range

Plant engineering
Control engineering

Technical Data

Classification ETIM 5:

ETIM 5.0 Class-ID: EC000309

ETIM 5.0 Class-Description: Module for active network component/network unit

Classification ETIM 6:

ETIM 6.0 Class-ID: EC000309

ETIM 6.0 Class-Description: Module for active network component/network unit

Rated voltage (V):

max. 125 V

Rated current (A):

max. 1.5 A

Pollution degree:

3

Contacts:

Copper alloy, gold-plated

Last Update (09.07.2020)

©2020 Lapp Group - Technical changes reserved

Product Management www.lappkabel.de

You can find the current technical data in the corresponding data sheet.

PN 0456 / 02_03.16

EPIC® CE6326 Connector RJ45

Number of contacts:	8
Termination methods:	IDC/piercing termination: Cat 5, AWG 24-26
Cycle of mechanical operation:	100
Temperature range:	-20 °C ... +85 °C

Note

Photographs and graphics are not to scale and do not represent detailed images of the respective products. Prices are net prices without VAT and surcharges. Sale to business customers only.

EPIC® CE6326 Connector RJ45

Article number	Article description	Contact type	Number of operating contacts	Pieces / PU
RJ45 connector for MCS 8 RJ45				
CE6326	CE6326	male	8	10

Last Update (09.07.2020)

©2020 Lapp Group - Technical changes reserved

Product Management www.lappkabel.de

You can find the current technical data in the corresponding data sheet.
PN 0456 / 02_03.16