

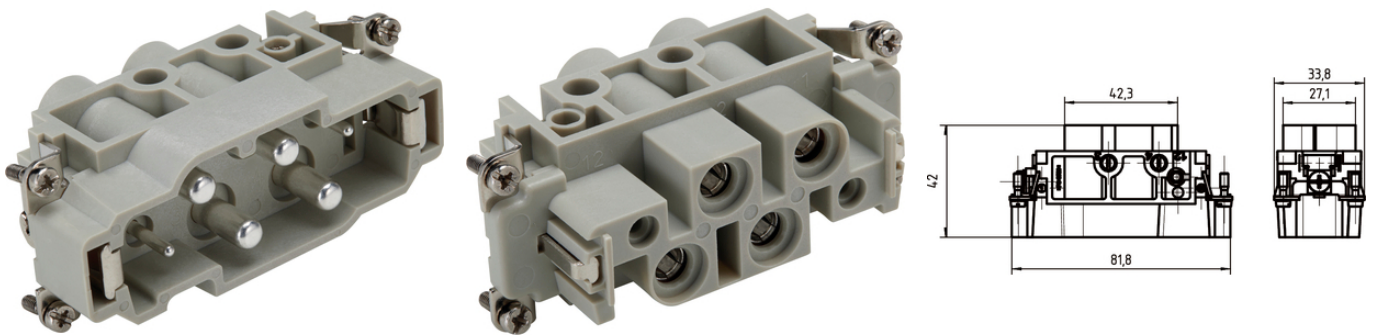
EPIC® Power K 4/2

Combination insert Power and Control

The combined insert is suitable for power and control and can be used, for example, in the area of recoverable energy and control systems.

Info

Combination insert Power and Control



Mechanical and plant engineering



Wind Energy



Temperature-resistant

Benefits

Power and control in one connector insert
Best in combination with ÖLFLEX® SERVO

Application range

Mechanical engineering
Renewable energy
Control engineering

Technical Data

Classification ETIM 5:

ETIM 5.0 Class-ID: EC000438

ETIM 5.0 Class-Description: Contact insert for industrial connectors

Classification ETIM 6:

ETIM 6.0 Class-ID: EC000438

ETIM 6.0 Class-Description: Contact insert for industrial connectors

Rated voltage (V):

830 V Power

Last Update (14.10.2019)

©2019 Lapp Group - Technical changes reserved

Product Management www.lappkabel.de

You can find the current technical data in the corresponding data sheet.

PN 0456 / 02_03.16

EPIC® Power K 4/2

	400 V Control
Rated impulse voltage:	8 kV
Rated current (A):	80 A Power 16 A Control
Pollution degree:	3
Flammability:	UL94 V-0
Contact resistance:	< 5 mOhm
Number of contacts:	4 + 2 + PE
Termination methods:	Screw termination: 1.5 - 16.0 mm ² (power contact) Screw termination: 0.5 - 2.5 mm ² (control contact)
Stripping length (mm):	16 mm (Power) 6 mm (Control)
Material:	PC, polycarbonate
Cycle of mechanical operation:	500
Certifications:	UL-tested: UL File Number: E75770
Temperature range:	-40°C to +125°C

Note

PE connection with a 16mm² wire only with the recommended ring lug 44424029

The inserts must be used with the appropriate housings

Photographs and graphics are not to scale and do not represent detailed images of the respective products.

Prices are net prices without VAT and surcharges. Sale to business customers only.

To connect stranded conductors, use a end sleeve.

EPIC® Power K 4/2

Article number	Article description	Contact type	Number of operating contacts	Pieces / PU
EPIC® K 4/2 screw termination				
44424043	EPIC® K 4/2 SS	male	4 + 2 + PE	10
44424044	EPIC® K 4/2 BS	female	4 + 2 + PE	10

Last Update (14.10.2019)

©2019 Lapp Group - Technical changes reserved

Product Management www.lappkabel.de

You can find the current technical data in the corresponding data sheet.

PN 0456 / 02_03.16

EPIC® Power K 4/2

