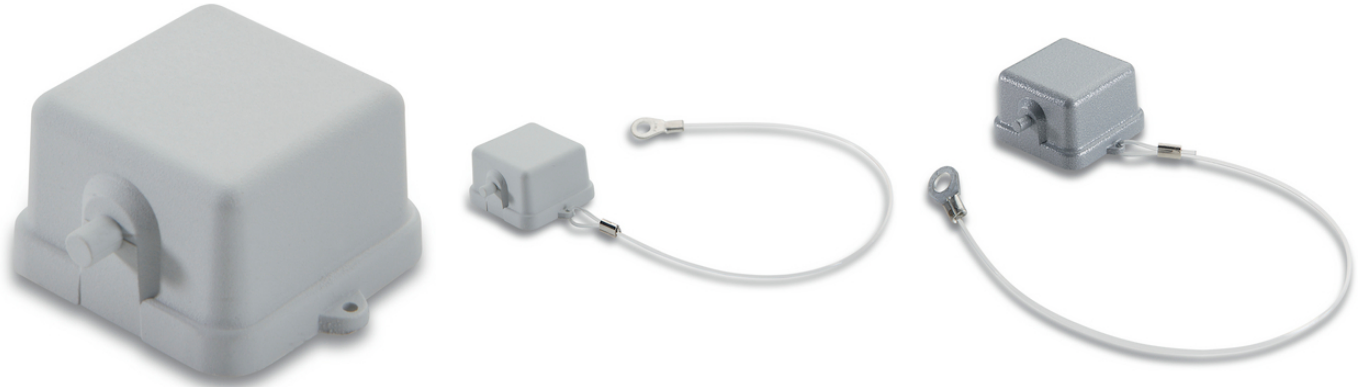


## EPIC® Protective cover H-A 3

The protective cover made of a combination of thermoplastic and metal is suitable for use with H-A 3 housings.



Mechanical resistance



Reliability



Waterproof

### Product features

Protective cover made of thermoplastics and metal for H-A 3 housings

Retaining cord with cable lug for attachment with screw on mounting base or wall

Retaining cord with variable loop for attachment to the cable

### Technical Data

Classification ETIM 5:

ETIM 5.0 Class-ID: EC002314

ETIM 5.0 Class-Description: Cap for industrial connectors

Classification ETIM 6:

ETIM 6.0 Class-ID: EC002314

ETIM 6.0 Class-Description: Cap for industrial connectors

### Note

Photographs and graphics are not to scale and do not represent detailed images of the respective products.

Prices are net prices without VAT and surcharges. Sale to business customers only.

**EPIC® Protective cover H-A 3**

Article number	Article description	Version	Bolts	Securing cord	Material	Packaging unit
For H-A 3 panel-mount base, surface-mount base, cable coupler hood with male or female inserts						
10513000	H-A 3 MDBF-S	for housing H-A 3 with male inserts	2	with cable lug	Metal	10
10513100	H-A 3 MDBF-B	for housing H-A 3 with female inserts	2	with cable lug	Metal	10
For H-A 3 panel-mount base, surface-mount base, cable coupler hood with male inserts						
10430000	H-A 3 KDB-S	for housing H-A 3 with male inserts	2	-	Plastic	10
10430400	H-A 3 KDBF-S	for housing H-A 3 with male inserts	2	with cable lug	Plastic	10
For H-A 3 panel-mount base, surface-mount base, cable coupler hood with female inserts						
10430300	H-A 3 KDB-B	for housing H-A 3 with female inserts	2	-	Plastic	10
10430100	H-A 3 KDBF-B	for housing H-A 3 with female inserts	2	with cable lug	Plastic	10

Last Update (16.07.2024)

©2024 Lapp Group - Technical changes reserved

 Product Management [www.lappkabel.de](http://www.lappkabel.de)

 You can find the current technical data in the corresponding data sheet.  
 PN 0456 / 02\_03\_16