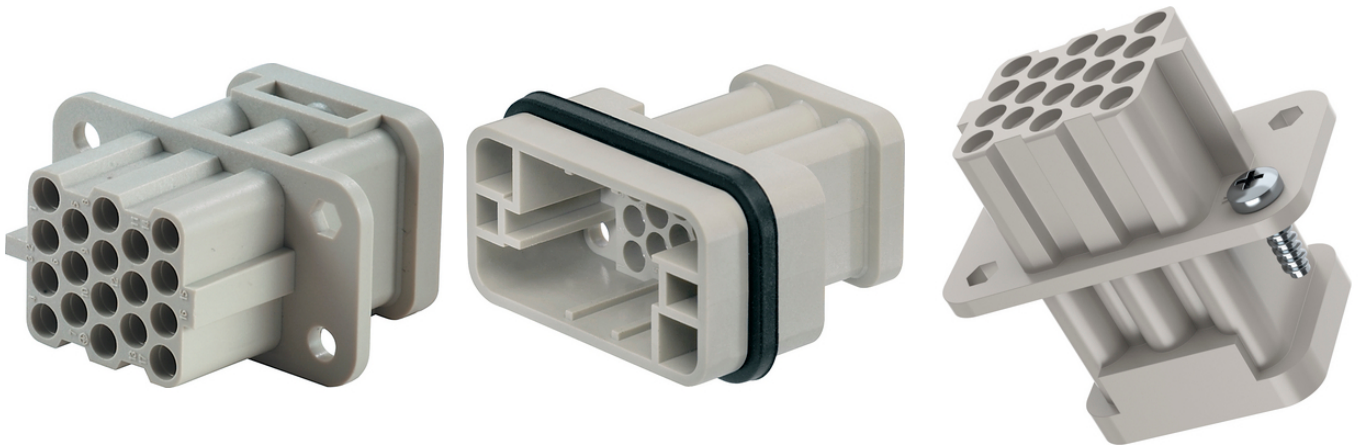


## EPIC® H-Q 17

This compact rectangular connector insert ensures that there is a powerful drive every time. The 17-pin variant is suitable for supplying power to servo drives, for example, and can be (semi-)automatically assembled with a cable thanks to crimp termination technology.



### Benefits

High power up to 10 A despite extremely space-saving design for very small devices.

Crimp connection creates a vibration-proof connection, ensures maximum contacting reliability between contact and cable and is suitable for automated assembly.

Mateable with market standard connectors.

### Application range

For power supply connection of devices and machines in various applications.

Typical areas of application are electric motors and servo drives.

For use with housings of the EPIC® H-Q series.

### Technical Data

Classification ETIM 5:	ETIM 5.0 Class-ID: EC000438
Classification ETIM 6:	ETIM 6.0 Class-ID: EC000438 ETIM 6.0 Class-Description: Contact insert for industrial connectors
Rated voltage (V):	IEC: 250 V UL: 600 V CSA: 600 V
Rated impulse voltage:	4 kV
Rated current (A):	max. 10 A
Pollution degree:	2
Contact resistance:	< 2 mOhm
Contacts:	Copper alloy, hard silver/gold-plated
Number of contacts:	17 + PE
Termination methods:	Crimp termination: 0.14 - 2.5 mm <sup>2</sup>
Cycle of mechanical operation:	500
Temperature range:	-40 °C to +125 °C

Last Update (29.03.2024)

©2024 Lapp Group - Technical changes reserved

Product Management [www.lappkabel.de](http://www.lappkabel.de)

You can find the current technical data in the corresponding data sheet.

PN 0456 / 02\_03.16

## EPIC® H-Q 17

**Note**

Photographs and graphics are not to scale and do not represent detailed images of the respective products.  
Prices are net prices without VAT and surcharges. Sale to business customers only.

**EPIC® H-Q 17**

Article number	Article description	Contact type	Article designation	Number of operating contacts	Pieces / PU
H-Q 17 crimp termination					
44420525	H-Q 17 SCM	male	machined	1 - 17	1
44420524	H-Q 17 BCM	female	machined	1 - 17	1

## EPIC® H-Q 17



Last Update (29.03.2024)

©2024 Lapp Group - Technical changes reserved

Product Management [www.lappkabel.de](http://www.lappkabel.de)

You can find the current technical data in the corresponding data sheet.

PN 0456 / 02\_03.16