

EPIC® H-Q 12

Multi-pole insert for the small H-A 3 housing

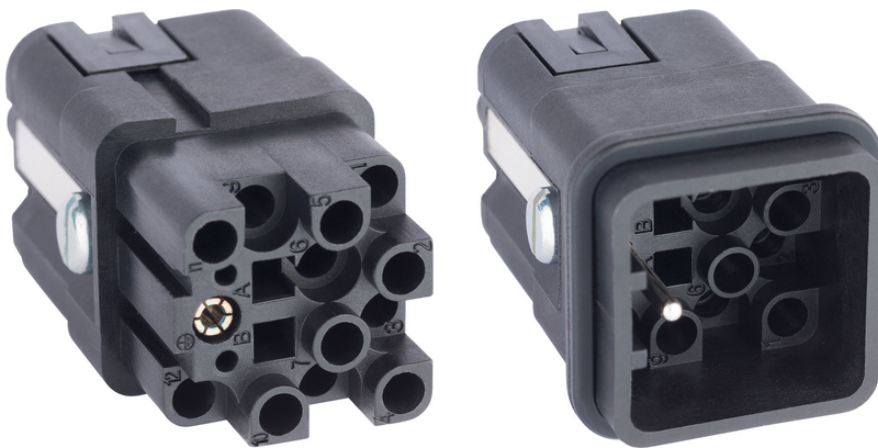
EPIC® H-Q 12 Insert for H-A 3 housings

Info

12 power contacts in confined spaces

Space saving, crimping contact

Made in Europe



Supplementary automation components from Lapp



Mechanical and plant engineering



Variety of approval certifications

Benefits

Mateable with market standard connectors.

Suitable for conductor cross-sections from 0.14 - 4.0 mm².

High performance crimping contacts

PE contact with screw connection

Application range

Machine and equipment manufacturing

Control engineering

Technical Data

Classification ETIM 5:

ETIM 5.0 Class-ID: EC000438

ETIM 5.0 Class-Description: Contact insert for industrial connectors

Classification ETIM 6:

ETIM 6.0 Class-ID: EC000438

Last Update (24.04.2024)

©2024 Lapp Group - Technical changes reserved

Product Management www.lappkabel.de

You can find the current technical data in the corresponding data sheet.

PN 0456 / 02_03.16

EPIC® H-Q 12

| | |
|--------------------------------|--|
| | ETIM 6.0 Class-Description: Contact insert for industrial connectors |
| Rated voltage (V): | IEC: 400 V UL: 600 V CSA: 600 V |
| Rated impulse voltage: | 6 kV |
| Rated current (A): | IEC: 10 A UL: 14 A CSA: 10 A |
| Pollution degree: | 3 |
| Flammability: | UL94 V-0 |
| Contact resistance: | < 3 mOhm |
| Contacts: | Copper alloy, hard silver/gold-plated |
| Number of contacts: | 12 + PE |
| Termination methods: | Crimp termination: 0.14 - 2.5 mm ² |
| Material: | PA Polyamid |
| Cycle of mechanical operation: | 200 |
| VDE-tested: | CSA-tested: CSA File Number: 262771 UL-tested: UL File Number: E75770 |
| Temperature range: | -40 °C to +120 °C |

Note

Photographs and graphics are not to scale and do not represent detailed images of the respective products.
Prices are net prices without VAT and surcharges. Sale to business customers only.

EPIC® H-Q 12

| Article number | Article description | Contact type | Number of operating contacts | Pieces / PU |
|--------------------------|---------------------|--------------|------------------------------|-------------|
| H-Q 12 Crimp termination | | | | |
| 44424049 | H-Q 12 SC | male | 1 - 12 | 10 |
| 44424050 | H-Q 12 BC | female | 1 - 12 | 10 |