

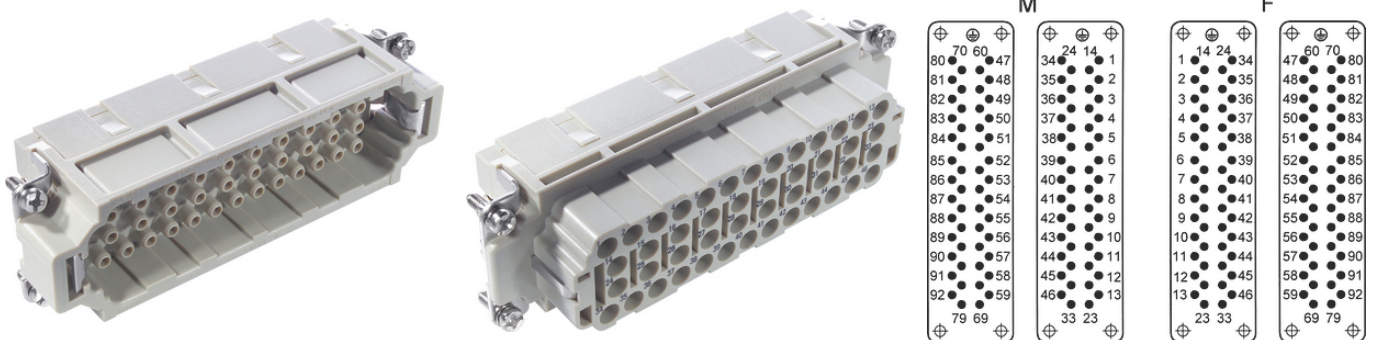
## EPIC® H-EE 92

H-EE inserts with high contact density based on the proven H-BE series.

The connector insert for installation in rectangular connectors offers a broad range of applications, for example in investment construction.

### Info

Inserts with high contact density for medium power



Mechanical and plant engineering



Temperature-resistant

### Benefits

The H-EE inserts with machined contacts for a high number of pins in very tight spaces.  
For assembly in H-B housing

### Application range

Mechanical engineering  
Plant engineering  
Appliance and apparatus construction

### Technical Data

Classification ETIM 5:

ETIM 5.0 Class-ID: EC000438

ETIM 5.0 Class-Description: Contact insert for industrial connectors

Classification ETIM 6:

ETIM 6.0 Class-ID: EC000438

ETIM 6.0 Class-Description: Contact insert for industrial connectors

Rated voltage (V):

IEC: 500 VUL: 600 VCSA: 600 V

Rated impulse voltage:

6 kV

Last Update (24.04.2024)

©2024 Lapp Group - Technical changes reserved

Product Management [www.lappkabel.de](http://www.lappkabel.de)

You can find the current technical data in the corresponding data sheet.

PN 0456 / 02\_03.16

**EPIC® H-EE 92**

Rated current (A):	IEC: 16 A UL: 16 A CSA: 16 A
Pollution degree:	3
Contact resistance:	< 2 mOhm
Contacts:	Copper alloy, hard silver/gold-plated
Number of contacts:	46 + PE
Termination methods:	Crimp termination: 0.5 - 4.0 mm <sup>2</sup>
Cycle of mechanical operation:	100
Temperature range:	-40 °C to +100 °C, short-term up to +125 °C

**Note**

Photographs and graphics are not to scale and do not represent detailed images of the respective products.  
Prices are net prices without VAT and surcharges. Sale to business customers only.

**EPIC® H-EE 92**

Article number	Article description	Contact type	Article designation	Number of operating contacts	Pieces / PU
H-EE 92 crimp termination					
10186500	H-EE 46 SC	male	machined	47 - 92	5
10187500	H-EE 46 BC	female	machined	47 - 92	5