

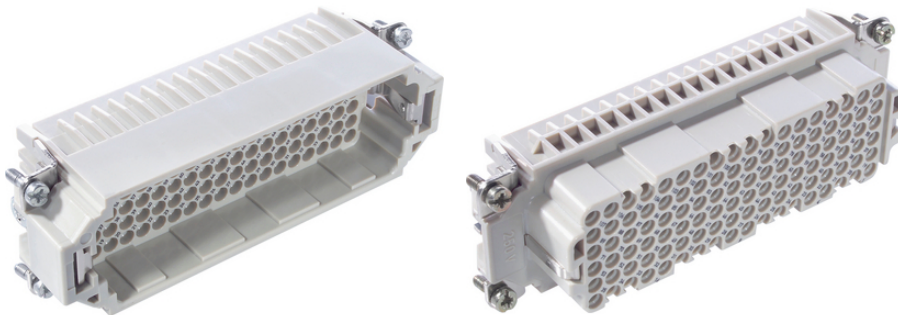
EPIC® H-DD 216

The H-DD series with machined crimp contacts - for a high number of pins in very tight spaces.

The H-DD insert with machined contacts is designed for a high number of poles on a small area. Because of this, smaller housing can be used.

Info

Highest packing density for compact connectors



Mechanical and plant engineering



Space requirement

Benefits

The H-DD series with machined contacts is designed for a high number of pins in very tight spaces. This allows for smaller housing types to be chosen.

Application range

Mechanical engineering
Light & sound technology
Plastics industry

Technical Data

Classification ETIM 5:

ETIM 5.0 Class-ID: EC000438

ETIM 5.0 Class-Description: Contact insert for industrial connectors

Classification ETIM 6:

ETIM 6.0 Class-ID: EC000438

ETIM 6.0 Class-Description: Contact insert for industrial connectors

Rated voltage (V):

IEC: 250 V

UL: 600 V

Last Update (16.07.2024)

©2024 Lapp Group - Technical changes reserved

Product Management www.lappkabel.de

You can find the current technical data in the corresponding data sheet.

PN 0456 / 02_03.16

EPIC® H-DD 216

	CSA: 600 V
Rated impulse voltage:	2.5 kV
Rated current (A):	IEC: 10 A UL: 8.5 A CSA: 10 A
Pollution degree:	2
Contact resistance:	< 3 mOhm
Contacts:	Copper alloy, hard silver/gold-plated
Number of contacts:	108 + PE
Termination methods:	Crimp termination: 0.14 - 2.5 mm ²
Cycle of mechanical operation:	100
VDE-tested:	Certified production control: VDE-REG. no.: B437 UL-tested: UL File Number: E75770
Temperature range:	-40°C to +100°C, short-term up to +125°C

Note

Photographs and graphics are not to scale and do not represent detailed images of the respective products.
Prices are net prices without VAT and surcharges. Sale to business customers only.

EPIC® H-DD 216

Article number	Article description	Contact type	Article designation	Number of operating contacts	Packaging unit
H-DD 216 crimp termination					
11285500	H-DD 108 SCM	male	machined	109 - 216	5
11286500	H-DD 108 BCM	female	machined	109 - 216	5

Last Update (16.07.2024)

©2024 Lapp Group - Technical changes reserved

Product Management www.lappkabel.de

You can find the current technical data in the corresponding data sheet.

PN 0456 / 02_03_16