

## EPIC® H-D 8

Multi-pole inserts for machined crimp contacts

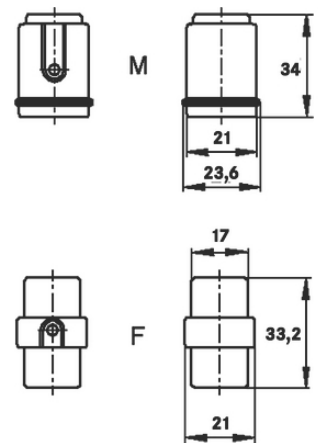
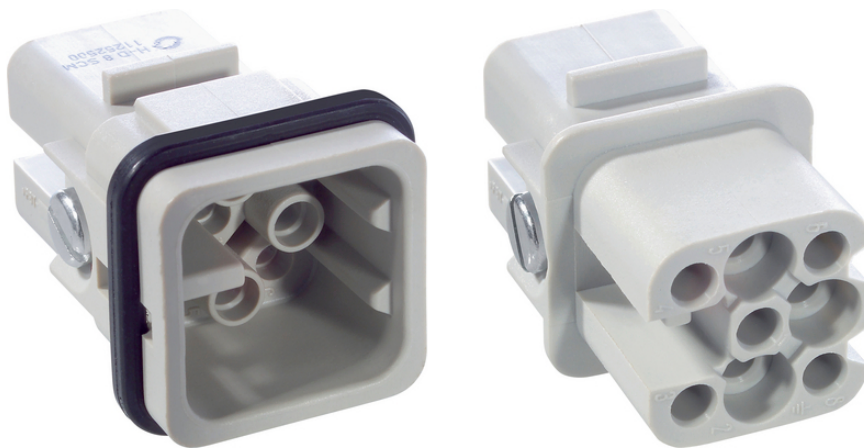
The powerful and compact standard insert has 8 contacts with crimp termination and is suitable, for example, for control systems.

### Info

Compact, powerful standard insert

For machined contacts for fast processing with the crimping tool

Made in Germany



Mechanical and plant engineering



Space requirement



Robust

### Benefits

Small, high-performance connector

High performance crimping contacts

### Application range

Machine and equipment manufacturing

Control engineering

### Technical Data

Classification ETIM 5:

ETIM 5.0 Class-ID: EC000438

ETIM 5.0 Class-Description: Contact insert for industrial connectors

Classification ETIM 6:

ETIM 6.0 Class-ID: EC000438

ETIM 6.0 Class-Description: Contact insert for industrial connectors

Last Update (08.01.2024)

©2024 Lapp Group - Technical changes reserved

Product Management [www.lappkabel.de](http://www.lappkabel.de)

You can find the current technical data in the corresponding data sheet.

PN 0456 / 02\_03.16

**EPIC® H-D 8**

Rated voltage (V):	IEC: 24 V (AC)/60 V (DC) metal housing; 250 V thermoplastic housing; UL: 250 V
Rated impulse voltage:	2.5 kV
Rated current (A):	IEC: 10 A UL: 10 A
Pollution degree:	3
Flammability:	UL94 V-0
Contact resistance:	< 2 mOhm
Contacts:	Copper alloy, hard silver/gold-plated
Number of contacts:	8
Termination methods:	Crimp termination: 0.14 - 2.5 mm <sup>2</sup>
Material:	PBT Polyester
Cycle of mechanical operation:	100
Temperature range:	-40°C to +100°C, short-term up to +125°C

**Note**

Photographs and graphics are not to scale and do not represent detailed images of the respective products.  
Prices are net prices without VAT and surcharges. Sale to business customers only.

**EPIC® H-D 8**

Article number	Article description	Contact type	Number of operating contacts	Pieces / PU
11252500	H-D 8 SCM	male	1 - 8	10
11253500	H-D 8 BCM	female	1 - 8	10