

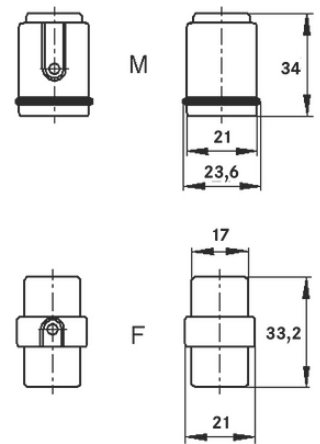
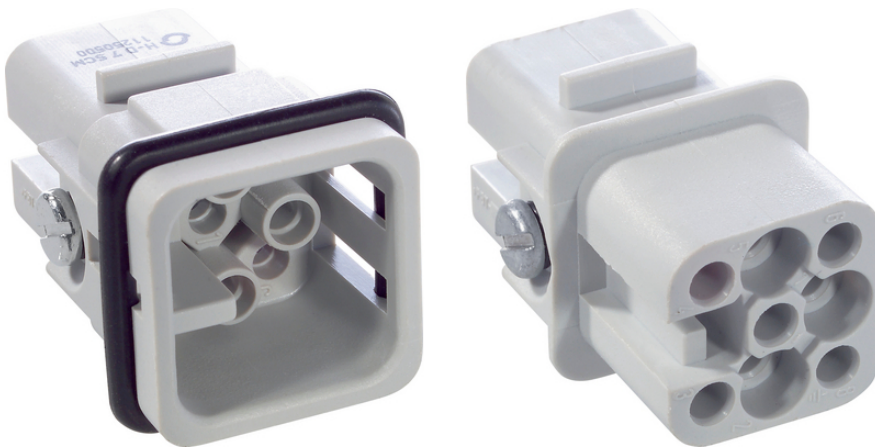
EPIC® H-D 7 stamped

Multi-pole inserts for stamped crimp contacts

The compact standard insert with space-saving crimped contact can be used in temperatures from -40 to +100 degrees and up to +125 degrees for a short period.

Info

for automated production with crimping machine
 Suitable for processing with contacts on reel
 Made in Europe



Space requirement



Robust

Benefits

Small, high-performance connector
 High performance crimping contacts

Application range

Machine and equipment manufacturing
 Control engineering

Technical Data

Classification ETIM 5:

ETIM 5.0 Class-ID: EC000438
 ETIM 5.0 Class-Description: Contact insert for industrial connectors

Classification ETIM 6:

ETIM 6.0 Class-ID: EC000438
 ETIM 6.0 Class-Description: Contact insert for industrial connectors

Rated voltage (V):

IEC: 24 V (AC)/60 V (DC) metal housing; 250 V thermoplastic

Last Update (16.07.2024)

©2024 Lapp Group - Technical changes reserved

Product Management www.lappkabel.de

You can find the current technical data in the corresponding data sheet.

PN 0456 / 02_03.16

EPIC® H-D 7 stamped

	housing; UL: 250 V
Rated impulse voltage:	2.5 kV
Rated current (A):	IEC: 10 A UL: 10 A
Pollution degree:	3
Flammability:	UL94 V-0
Contact resistance:	< 2 mOhm
Contacts:	Copper alloy, hard silver/gold-plated
Number of contacts:	7 + PE
Termination methods:	Crimp termination: 0.14 - 2.5 mm ²
Material:	PBT Polyester
Cycle of mechanical operation:	100
Certifications:	Certified production control: VDE-REG. no.: B437 UL-tested: UL File Number: E75770
Temperature range:	-40°C to +100°C, short-term up to +125°C

Note

Photographs and graphics are not to scale and do not represent detailed images of the respective products. Prices are net prices without VAT and surcharges. Sale to business customers only.

EPIC® H-D 7 stamped

Article number	Article description	Contact type	Article designation	Number of operating contacts	Packaging unit
11250000	H-D 7 SCG	male	stamped	1 - 7	10
11251000	H-D 7 BCG	female	stamped	1 - 7	10

Last Update (16.07.2024)

©2024 Lapp Group - Technical changes reserved

Product Management www.lappkabel.de

You can find the current technical data in the corresponding data sheet.

PN 0456 / 02_03_16