

## EPIC® H-D 7 machined

Multi-pole inserts for machined crimp contacts

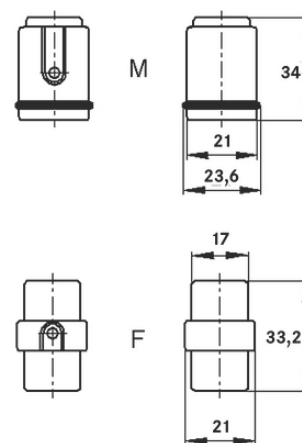
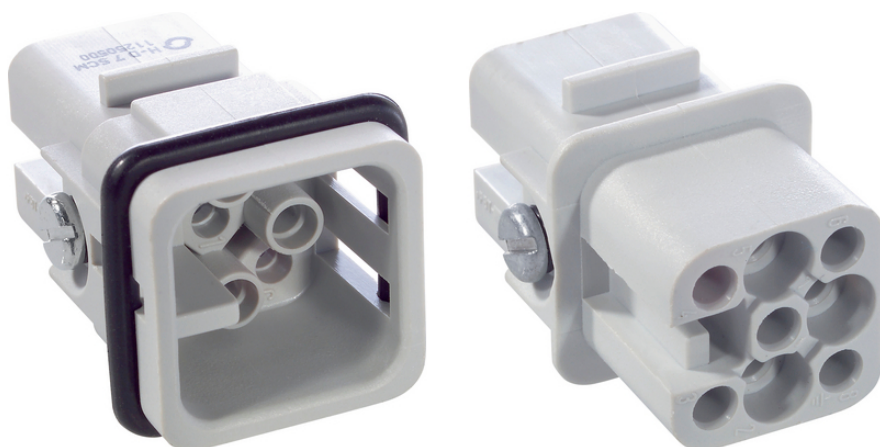
The compact standard insert has machined contacts and is suitable, for example, for control systems and machine or device manufacturing.

### Info

Compact, powerful standard insert

For machined contacts for fast processing with the crimping tool

Made in Germany



Mechanical and plant engineering



Space requirement



Robust

### Benefits

Small, high-performance connector

High performance crimping contacts

### Application range

Machine and equipment manufacturing

Control engineering

### Technical Data

Classification ETIM 5:

ETIM 5.0 Class-ID: EC000438

ETIM 5.0 Class-Description: Contact insert for industrial connectors

Classification ETIM 6:

ETIM 6.0 Class-ID: EC000438

ETIM 6.0 Class-Description: Contact insert for industrial

Last Update (22.02.2024)

©2024 Lapp Group - Technical changes reserved

Product Management [www.lappkabel.de](http://www.lappkabel.de)

You can find the current technical data in the corresponding data sheet.

PN 0456 / 02\_03.16

## EPIC® H-D 7 machined

	connectors
Rated voltage (V):	IEC: 24 V (AC)/60 V (DC) metal housing; 250 V thermoplastic housing; UL: 250 V
Rated impulse voltage:	2.5 kV
Rated current (A):	IEC: 10 A UL: 10 A
Pollution degree:	3
Flammability:	UL94 V-0
Contact resistance:	< 2 mOhm
Contacts:	Copper alloy, hard silver/gold-plated
Number of contacts:	7 + PE
Termination methods:	Crimp termination: 0.14 - 2.5 mm <sup>2</sup>
Material:	PBT Polyester
Cycle of mechanical operation:	100
Certifications:	Certified production control: VDE-REG. no.: B437 UL-tested: UL File Number: E75770
Temperature range:	-40 °C to +100 °C, short-term up to +125 °C

### Note

Photographs and graphics are not to scale and do not represent detailed images of the respective products.  
Prices are net prices without VAT and surcharges. Sale to business customers only.

**EPIC® H-D 7 machined**

Article number	Article description	Contact type	Article designation	Number of operating contacts	Pieces / PU
11250500	H-D 7 SCM	male	machined	1 - 7	10
11251500	H-D 7 BCM	female	machined	1 - 7	10