

## EPIC® H-BS 6

Inserts for high currents.

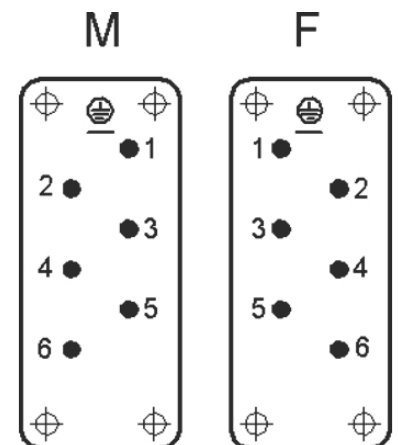
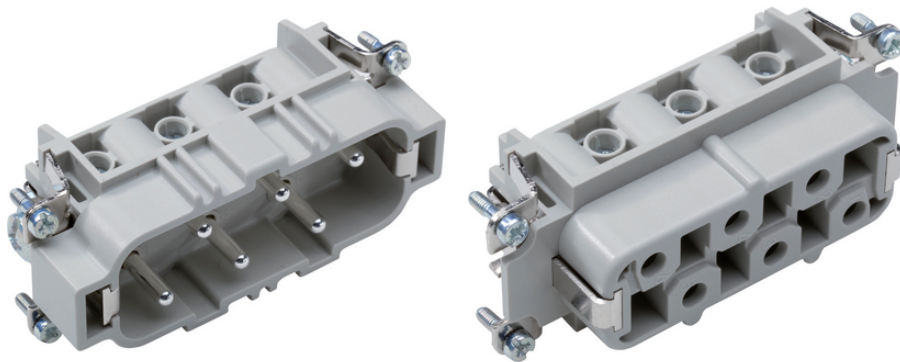
The standard connector insert is suitable for current load up to 35 A and can be used, for example, in drive systems or mechanical engineering.

### Info

Standard insert for currents up to 35A

Railway applications

Made in Germany



Mechanical and plant engineering



Robust



Temperature-resistant

### Benefits

High rating for currents up to 35 A

Screw termination up to a conductor cross section of 6 mm<sup>2</sup>

Railway applications

- Fire protection on railway vehicles: Test according EN 45545-2. Requirement sets R22 and R23. Hazard level HL1, HL2 and HL3

UL tested for application in control cabinets according UL 508 / UL 2237

### Application range

Plant engineering

Mechanical engineering

Drive systems

Railway applications / vehicle construction

### Technical Data

Last Update (22.02.2024)

©2024 Lapp Group - Technical changes reserved

Product Management [www.lappkabel.de](http://www.lappkabel.de)

You can find the current technical data in the corresponding data sheet.

PN 0456 / 02\_03.16

## EPIC® H-BS 6

Classification ETIM 5:	ETIM 5.0 Class-ID: EC000438 ETIM 5.0 Class-Description: Contact insert for industrial connectors
Classification ETIM 6:	ETIM 6.0 Class-ID: EC000438 ETIM 6.0 Class-Description: Contact insert for industrial connectors
Rated voltage (V):	IEC: 500 VUL: 600 VCSA: 600 V Conductor - conductor: 690 V
Rated impulse voltage:	6 kV
Rated current (A):	IEC: 35 A UL: 35 A CSA: 35 A
Pollution degree:	3
Contact resistance:	< 2 mOhm
Contacts:	Copper alloy, hard silver-plated
Number of contacts:	6 + PE
Termination methods:	Screw termination: 0.5 - 6 mm <sup>2</sup>
Stripping length (mm):	8
Cycle of mechanical operation:	100
VDE-tested:	Certified production control: VDE-REG. no.: B437 UL-tested: UL File Number: E75770 and E483837
Temperature range:	-40°C to +100°C, short-term up to +125°C

### Note

Prices are net prices without VAT and surcharges. Sale to business customers only.

**EPIC® H-BS 6**

Article number	Article description	Contact type	Wire protection	Number of operating contacts	Pieces / PU
H-BS 6 screw termination					
10170000	H-BS 6 SS	male	yes	1 - 6	5
10171000	H-BS 6 BS	female	yes	1 - 6	5

## EPIC® H-BS 6

