

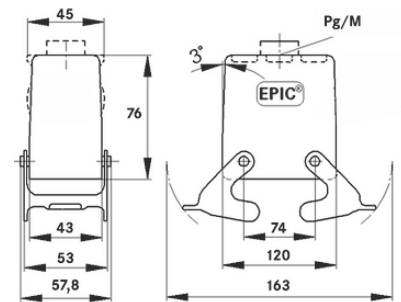
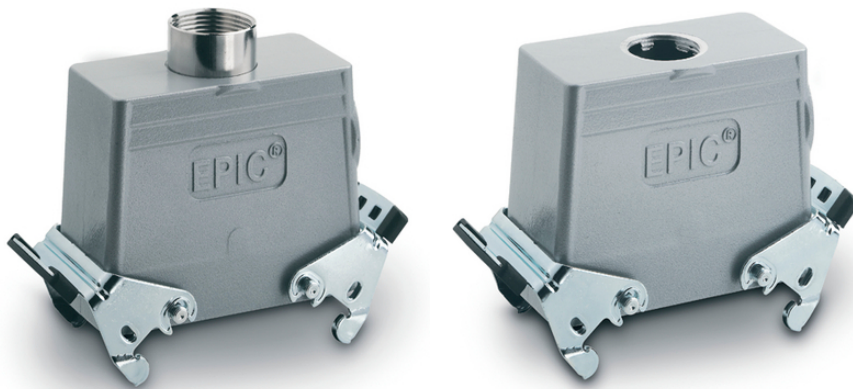
## EPIC® H-B 24 TGBH

Housing design H-B. The industry standard.

The universal metal housing for rectangular connectors can not only be used in investment construction. It has 2 double levers and a direct cable entry.

### Info

- Non-slip ridges for comfortable disconnecting
- For connection with counterpart with integrated cover
- Protection rating UL50E tested



- Supplementary automation components from Lapp
- Mechanical and plant engineering
- Mechanical resistance
- Robust
- Waterproof

### Benefits

Ideal for many applications due to a wide range of housings and inserts  
More interior space for wiring

### Application range

Plant engineering  
Light & sound technology  
Plastics industry

Last Update (16.07.2024)

©2024 Lapp Group - Technical changes reserved

Product Management [www.lappkabel.de](http://www.lappkabel.de)

You can find the current technical data in the corresponding data sheet.

PN 0456 / 02\_03.16

## EPIC® H-B 24 TGBH

### Product features

Hood, high version  
Dual levers  
Straight cable entry  
Versions with / without neck

### Technical Data

Classification ETIM 5:	ETIM 5.0 Class-ID: EC000437 ETIM 5.0 Class-Description: Housing for industrial connectors
Classification ETIM 6:	ETIM 6.0 Class-ID: EC000437 ETIM 6.0 Class-Description: Housing for industrial connectors
Material:	Housing: powder-coated aluminium alloy, grey Lever: zinc-plated steel Sealing: NBR
Protection rating:	IP 65 (latched) NEMA 250, UL50E: 12, 4 (latched)
VDE-tested:	Certified production control: VDE-REG. no.: B437 UL-tested: UL File Number: E75770
Temperature range:	-40 °C to +100 °C, short-term up to +125 °C

### Note

Photographs and graphics are not to scale and do not represent detailed images of the respective products.  
Prices are net prices without VAT and surcharges. Sale to business customers only.

**EPIC® H-B 24 TGBH**

Article number	Article description	M	PG	Neck	Packaging unit
H-B housing: hood (straight cable entry, double lever, high version)					
70155400	H-B 24 TGBH 21	-	21	yes	5
70155600	H-B 24 TGBH 29	-	29	yes	5
79155400	H-B 24 TGBH M25	25	-	-	5
79155600	H-B 24 TGBH M32	32	-	-	5

Last Update (16.07.2024)

©2024 Lapp Group - Technical changes reserved

Product Management [www.lappkabel.de](http://www.lappkabel.de)

You can find the current technical data in the corresponding data sheet.  
PN 0456 / 02\_03\_16