

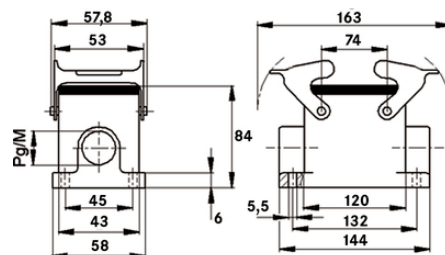
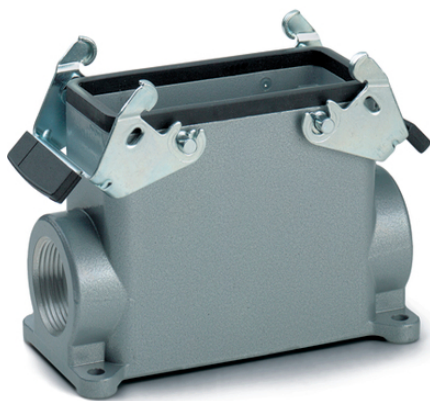
EPIC® H-B 24 SGRLH

Housing design H-B. The industry standard.

The robust metal housing for use in rectangular connectors consists of 2 double levers and 2 cable entries. It can be used, for example, in the plastics industry.

Info

- More interior space for wiring
- Double lever version with 2 levers for increased safety
- Protection rating UL50E tested



Supplementary automation components from Lapp



Mechanical and plant engineering



Mechanical resistance



Robust



Waterproof

Benefits

- Safe fixing with 4 screws
- Casted neck for easy assembly of the cable gland

Application range

- Plant engineering
- Light & sound technology
- Plastics industry

Last Update (18.08.2019)

©2019 Lapp Group - Technical changes reserved

Product Management www.lappkabel.de

You can find the current technical data in the corresponding data sheet.

PN 0456 / 02_03.16

EPIC® H-B 24 SGRLH

Product features

Surface-mount base, high version
Dual levers
2 cable entries

Technical Data

Classification ETIM 5:	ETIM 5.0 Class-ID: EC000437 ETIM 5.0 Class-Description: Housing for industrial connectors
Classification ETIM 6:	ETIM 6.0 Class-ID: EC000437 ETIM 6.0 Class-Description: Housing for industrial connectors
Material:	Housing: powder-coated aluminium alloy, grey Lever: zinc-plated steel Sealing: NBR
Protection rating:	IP 65 (latched) NEMA 250, UL50E: 12, 4 (latched)
VDE-tested:	Certified production control: VDE-REG. no.: B437 UL-tested: UL File Number: E75770
Temperature range:	-40°C to +100°C, short-term up to +125°C

Note

Photographs and graphics are not to scale and do not represent detailed images of the respective products.
Prices are net prices without VAT and surcharges. Sale to business customers only.

EPIC® H-B 24 SGRLH

Article number	Article description	M	PG	Pieces / PU
H-B housing: surface-mount base (2 cable entries, double lever, high version)				
70136200	H-B 24 SGRLH 21	-	21	5
70136400	H-B 24 SGRLH 29	-	29	5
79136200	H-B 24 SGRLH M25	25	-	5
79136400	H-B 24 SGRLH M32	32	-	5

Last Update (18.08.2019)

©2019 Lapp Group - Technical changes reserved

Product Management www.lappkabel.de

You can find the current technical data in the corresponding data sheet.

PN 0456 / 02_03.16