

EPIC® H-B 24 SGR

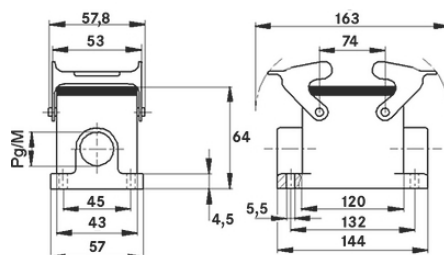
Housing design H-B. The industry standard.

The robust low metal housing consists of 2 double levers and 1 cable entry. It is suitable for use in applications of the plastics industry.

Info

Double lever version with 2 levers for increased safety

Protection rating UL50E tested



Supplementary automation components from Lapp



Mechanical and plant engineering



Mechanical resistance



Robust



Waterproof

Benefits

Safe fixing with 4 screws

Casted neck for easy assembly of the cable gland

Application range

Plant engineering

Light & sound technology

Plastics industry

Last Update (22.02.2024)

©2024 Lapp Group - Technical changes reserved

Product Management www.lappkabel.de

You can find the current technical data in the corresponding data sheet.

PN 0456 / 02_03.16

EPIC® H-B 24 SGR

Product features

Surface-mount base, low version

Dual levers

1 cable entry

Technical Data

Classification ETIM 5:

ETIM 5.0 Class-ID: EC000437

ETIM 5.0 Class-Description: Housing for industrial connectors

Classification ETIM 6:

ETIM 6.0 Class-ID: EC000437

ETIM 6.0 Class-Description: Housing for industrial connectors

Material:

Housing: powder-coated aluminium alloy, grey

Lever: zinc-plated steel

Sealing: NBR

Protection rating:

IP 65 (latched)

NEMA 250, UL50E: 12, 4 (latched)

VDE-tested:

Certified production control: VDE-REG. no.: B437

UL-tested:

UL File Number: E75770

Temperature range:

-40°C to +100°C, short-term up to +125°C

Note

Photographs and graphics are not to scale and do not represent detailed images of the respective products.

Prices are net prices without VAT and surcharges. Sale to business customers only.

EPIC® H-B 24 SGR

Article number	Article description	M	PG	Pieces / PU
H-B housing: surface-mount base (1 cable entry, double lever)				
10104000	H-B 24 SGR 21	-	21	5
19104000	H-B 24 SGR M25	25	-	5