

## EPIC® H-B 24 SDRH-LB

Housing design H-B. The industry standard.

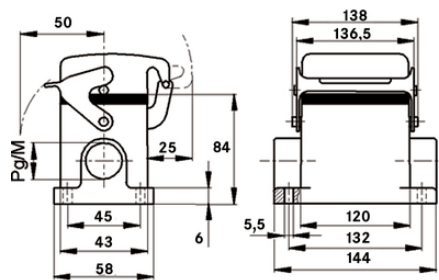
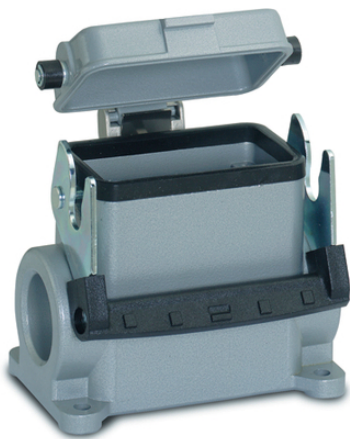
The robust metal housing for rectangular connectors has a cable entry and a single lever and can be used, for example, in the plastics industry.

### Info

Single Lever version for quick locking and simple unlocking with lifting aid

Metal lid with sturdy hinge

Protection rating UL50E tested



Waterproof



Robust



Mechanical resistance



Mechanical and plant engineering



Supplementary automation components from Lapp

### Benefits

Safe fixing with 4 screws

Casted neck for easy assembly of the cable gland

More interior space for wiring

### Application range

Plant engineering

Light & sound technology

Plastics industry

Last Update (02.08.2019)

©2019 Lapp Group - Technical changes reserved

Product Management [www.lappkabel.de](http://www.lappkabel.de)

You can find the current technical data in the corresponding data sheet.

PN 0456 / 02\_03.16

## EPIC® H-B 24 SDRH-LB

### Product features

Surface-mount base, high version  
Single lever  
1 cable entry  
Metal cover

### Technical Data

Classification ETIM 5:	ETIM 5.0 Class-ID: EC000437 ETIM 5.0 Class-Description: Housing for industrial connectors
Classification ETIM 6:	ETIM 6.0 Class-ID: EC000437 ETIM 6.0 Class-Description: Housing for industrial connectors
Material:	Housing: powder-coated aluminium alloy, grey Lever: zinc-plated steel Sealing: NBR
Protection rating:	IP 65 (latched) NEMA 250, UL50E: 12 (latched)
VDE-tested:	Certified production control: VDE-REG. no.: B437 UL-tested: UL File Number: E75770
Temperature range:	-40°C to +100°C, short-term up to +125°C

### Note

Photographs and graphics are not to scale and do not represent detailed images of the respective products.  
Prices are net prices without VAT and surcharges. Sale to business customers only.

**EPIC® H-B 24 SDRH-LB**

Article number	Article description	M	PG	Pieces / PU
H-B housing: surface-mount base (cover, 1 cable entry, single lever, high version)				
70164200	H-B 24 SDRH-LB 21	-	21	5
70164400	H-B 24 SDRH-LB 29	-	29	5
79164200	H-B 24 SDRH-LB M25	25	-	5
79164400	H-B 24 SDRH-LB M32	32	-	5

Last Update (02.08.2019)

©2019 Lapp Group - Technical changes reserved

Product Management [www.lappkabel.de](http://www.lappkabel.de)

You can find the current technical data in the corresponding data sheet.

PN 0456 / 02\_03\_16