

## EPIC® H-B 24 AG

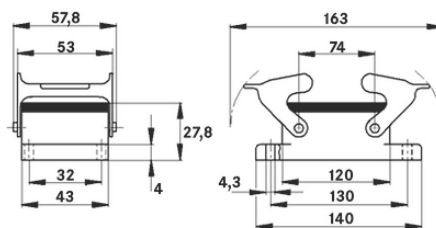
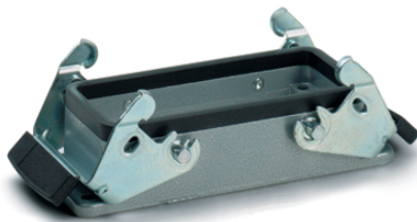
Housing design H-B. The industry standard.

The universal metal housing consists of 2 double levers and a seal and can be used, for example, in lighting and sound systems.

### Info

Double lever version with 2 levers for increased safety

Protection rating UL50E tested



Supplementary automation components from Lapp



Mechanical and plant engineering



Mechanical resistance



Robust



Waterproof

### Benefits

Safe fixing with 4 screws

### Application range

Plant engineering

Light & sound technology

Plastics industry

### Product features

H-A case: Wall base

Last Update (22.02.2024)

©2024 Lapp Group - Technical changes reserved

Product Management [www.lappkabel.de](http://www.lappkabel.de)

You can find the current technical data in the corresponding data sheet.

PN 0456 / 02\_03.16

## EPIC® H-B 24 AG

Dual levers  
Included: flat gasket

### Technical Data

|                        |                                                                                              |
|------------------------|----------------------------------------------------------------------------------------------|
| Classification ETIM 5: | ETIM 5.0 Class-ID: EC000437<br>ETIM 5.0 Class-Description: Housing for industrial connectors |
| Classification ETIM 6: | ETIM 6.0 Class-ID: EC000437<br>ETIM 6.0 Class-Description: Housing for industrial connectors |
| Material:              | Housing: powder-coated aluminium alloy, grey<br>Lever: zinc-plated steel<br>Sealing: NBR     |
| Protection rating:     | IP 65 (latched)<br>NEMA 250, UL50E: 12, 4 (latched)                                          |
| VDE-tested:            | Certified production control: VDE-REG. no.: B437<br>UL-tested:<br>UL File Number: E75770     |
| Temperature range:     | -40°C to +100°C, short-term up to +125°C                                                     |

### Note

Photographs and graphics are not to scale and do not represent detailed images of the respective products.  
Prices are net prices without VAT and surcharges. Sale to business customers only.

**EPIC® H-B 24 AG**

| Article number                               | Article description | M  | Pieces / PU |
|----------------------------------------------|---------------------|----|-------------|
| H-B housing: panel-mount base (double lever) |                     |    |             |
| 10102000                                     | H-B 24 AG           | AG | 5           |