

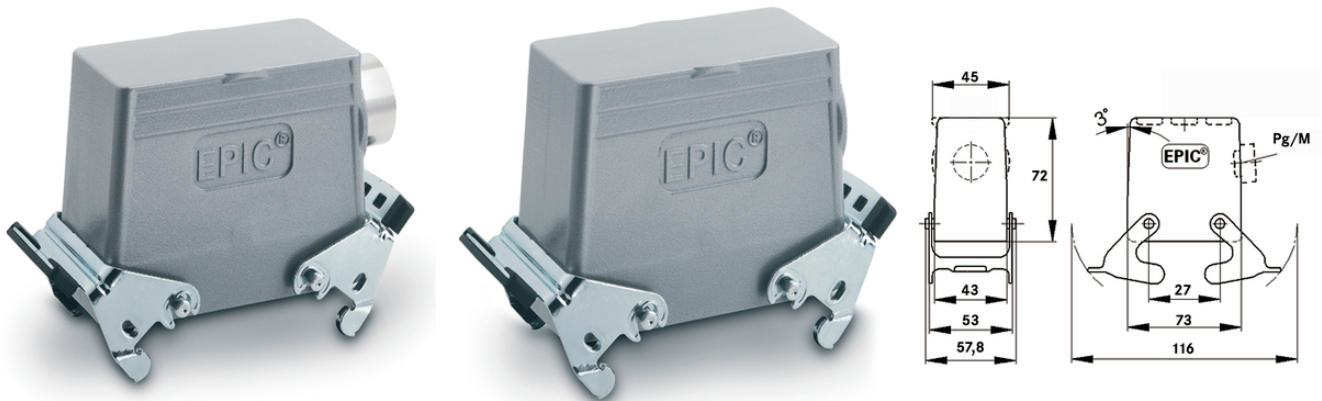
EPIC® H-B 10 TSBH

Housing design H-B. The industry standard.

The robust metal housing for use in investment construction has 2 double levers, a side cable entry and can be selected with or without a neck.

Info

- More interior space for wiring
- Double lever version with 2 levers for increased safety
- Protection rating UL50E tested



Supplementary automation components from Lapp



Mechanical and plant engineering



Mechanical resistance



Robust



Waterproof

Benefits

The smallest housing with single and double lever. The right housing is available for every application
For connection with counterpart with integrated cover

Application range

- Plant engineering
- Light & sound technology
- Plastics industry

Last Update (22.02.2020)

©2020 Lapp Group - Technical changes reserved

Product Management www.lappkabel.de

You can find the current technical data in the corresponding data sheet.

PN 0456 / 02_03.16

EPIC® H-B 10 TSBH

Product features

Hood, high version
Dual levers
Side cable entry
Versions with / without neck

Technical Data

Classification ETIM 5:	ETIM 5.0 Class-ID: EC000437 ETIM 5.0 Class-Description: Housing for industrial connectors
Classification ETIM 6:	ETIM 6.0 Class-ID: EC000437 ETIM 6.0 Class-Description: Housing for industrial connectors
Material:	Housing: powder-coated aluminium alloy, grey Lever: zinc-plated steel Sealing: NBR
Protection rating:	IP 65 (latched) NEMA 250, UL50E: 12, 4 (latched)
VDE-tested:	Certified production control: VDE-REG. no.: B437 UL-tested: UL File Number: E75770
Temperature range:	-40°C to +100°C, short-term up to +125°C

Note

Photographs and graphics are not to scale and do not represent detailed images of the respective products.
Prices are net prices without VAT and surcharges. Sale to business customers only.

EPIC® H-B 10 TSBH

Article number	Article description	M	PG	Neck	Pieces / PU
H-B housing: hood (side cable entry, double lever, high version)					
70057200	H-B 10 TSBH 21	-	21	yes	10
70057400	H-B 10 TSBH 29	-	29	yes	10
79057200	H-B 10 TSBH M25	25	-	-	10

Last Update (22.02.2020)

©2020 Lapp Group - Technical changes reserved

Product Management www.lappkabel.de

You can find the current technical data in the corresponding data sheet.

PN 0456 / 02_03.16