

EPIC® H-B 10 SGRLH

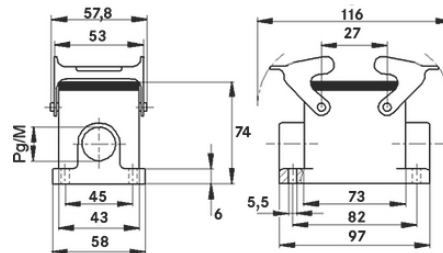
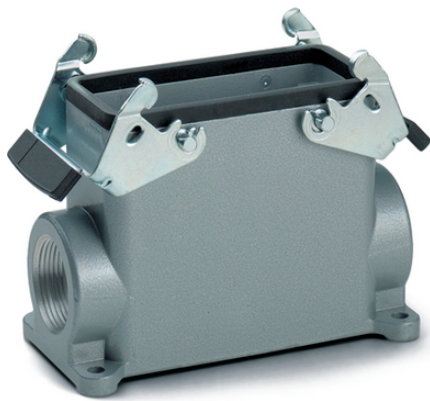
Housing design H-B. The industry standard.

The robust housing is suitable for use in the plastics industry. It consists of high base housing, 2 double levers and 2 cable entries.

Info

More interior space for wiring

Double lever version with 2 levers for increased safety



Supplementary automation components from Lapp



Mechanical and plant engineering



Mechanical resistance



Robust



Waterproof

Benefits

The smallest housing with single and double lever. The right housing is available for every application

Application range

Plant engineering

Light & sound technology

Plastics industry

Product features

Surface-mount base, high version

Last Update (24.04.2024)

©2024 Lapp Group - Technical changes reserved

Product Management www.lappkabel.de

You can find the current technical data in the corresponding data sheet.

PN 0456 / 02_03.16

EPIC® H-B 10 SGRLH

Dual levers
2 cable entries

Technical Data

| | |
|------------------------|--|
| Classification ETIM 5: | ETIM 5.0 Class-ID: EC000437 ETIM 5.0 Class-Description: Housing for industrial connectors |
| Classification ETIM 6: | ETIM 6.0 Class-ID: EC000437 ETIM 6.0 Class-Description: Housing for industrial connectors |
| Material: | Housing: powder-coated aluminium alloy, grey Lever: zinc-plated steel Sealing: NBR |
| Protection rating: | IP 65 (latched) NEMA 250, UL50E: 12, 4 (latched) |
| VDE-tested: | Certified production control: VDE-REG. no.: B437 UL-tested: UL File Number: E75770 |
| Temperature range: | -40 °C to +100 °C, short-term up to +125 °C |

Note

Photographs and graphics are not to scale and do not represent detailed images of the respective products.
Prices are net prices without VAT and surcharges. Sale to business customers only.

EPIC® H-B 10 SGRLH

| Article number | Article description | M | PG | Pieces / PU |
|---|---------------------|----|----|-------------|
| H-B housing: surface-mount base (2 cable entries, double lever, high version) | | | | |
| 70036200 | H-B 10 SGRLH 21 | - | 21 | 10 |
| 70036400 | H-B 10 SGRLH 29 | - | 29 | 10 |
| 79036200 | H-B 10 SGRLH M25 | 25 | - | 10 |
| 79036400 | H-B 10 SGRLH M32 | 32 | - | 10 |