

## EPIC® H-B 10 SDRH-LB

Housing design H-B. The industry standard.

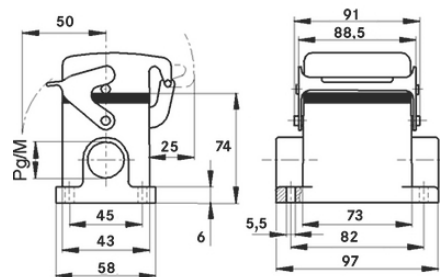
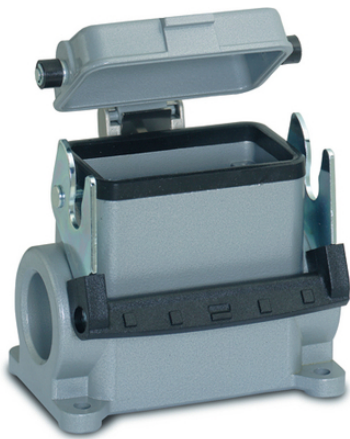
The robust high metal housing has a cable entry and a single lever and is ideal for use in the plastics industry.

### Info

Single Lever version for quick locking and simple unlocking with lifting aid

Metal lid with sturdy hinge

Protection rating UL50E tested



Supplementary automation components from Lapp



Mechanical and plant engineering



Mechanical resistance



Robust



Waterproof

### Benefits

The smallest housing with single and double lever. The right housing is available for every application

### Application range

Plant engineering

Light & sound technology

Plastics industry

### Product features

Last Update (31.12.2023)

©2023 Lapp Group - Technical changes reserved

Product Management [www.lappkabel.de](http://www.lappkabel.de)

You can find the current technical data in the corresponding data sheet.

PN 0456 / 02\_03.16

## EPIC® H-B 10 SDRH-LB

Surface-mount base, high version  
Single lever  
1 cable entry  
Metal cover

### Technical Data

|                        |  |
|------------------------|--|
| Classification ETIM 5: | ETIM 5.0 Class-ID: EC000437<br>ETIM 5.0 Class-Description: Housing for industrial connectors |
| Classification ETIM 6: | ETIM 6.0 Class-ID: EC000437<br>ETIM 6.0 Class-Description: Housing for industrial connectors |
| Material:              | Housing: powder-coated aluminium alloy, grey<br>Lever: zinc-plated steel<br>Sealing: NBR     |
| Protection rating:     | IP 65 (latched)<br>NEMA 250, UL50E: 12 (latched)   |
| VDE-tested:            | Certified production control: VDE-REG. no.: B437<br>UL-tested:<br>UL File Number: E75770     |
| Temperature range:     | -40°C to +100°C, short-term up to +125°C   |

### Note

Photographs and graphics are not to scale and do not represent detailed images of the respective products.  
Prices are net prices without VAT and surcharges. Sale to business customers only.

**EPIC® H-B 10 SDRH-LB**

| Article number   | Article description | M  | PG | Pieces / PU |
|--|---------------------|----|----|-------------|
| H-B housing: surface-mount base (cover, 1 cable entry, single lever, high version) |                     |    |    |             |
| 70064200   | H-B 10 SDRH-LB 21   | -  | 21 | 5           |
| 70064400   | H-B 10 SDRH-LB 29   | -  | 29 | 5           |
| 79064200   | H-B 10 SDRH-LB M25  | 25 | -  | 5           |
| 79064400   | H-B 10 SDRH-LB M32  | 32 | -  | 5           |

Last Update (31.12.2023)

©2023 Lapp Group - Technical changes reserved

Product Management [www.lappkabel.de](http://www.lappkabel.de)

You can find the current technical data in the corresponding data sheet.

PN 0456 / 02\_03.16