

## EPIC® H-A 10 TBFH-LB

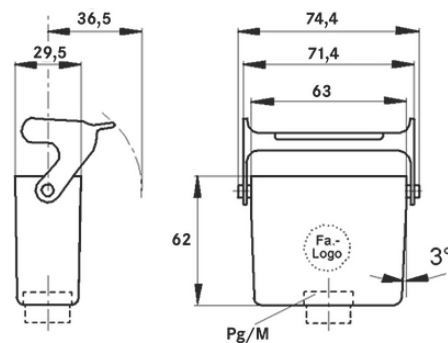
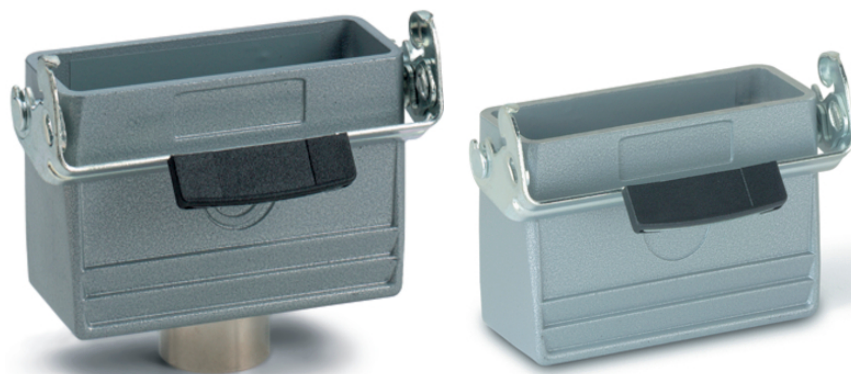
These connectors are attractive because of their compact housing.

The space-saving design of the metal housing is ideal for use in rectangular connectors in applications with restricted available space.

### Info

More interior space for wiring

Protection rating UL50E tested



Mechanical and plant engineering



Mechanical resistance



Robust



Waterproof

### Benefits

Small and space-saving for narrow available space

### Application range

Machine and equipment manufacturing

Control engineering

Electronic laboratory

### Product features

Cable coupler hood, high version

Single lever

Straight cable entry

Last Update (21.02.2024)

©2024 Lapp Group - Technical changes reserved

Product Management [www.lappkabel.de](http://www.lappkabel.de)

You can find the current technical data in the corresponding data sheet.

PN 0456 / 02\_03.16

## EPIC® H-A 10 TBFH-LB

Versions with / without neck

### Technical Data

Classification ETIM 5:	ETIM 5.0 Class-ID: EC000437 ETIM 5.0 Class-Description: Housing for industrial connectors
Classification ETIM 6:	ETIM 6.0 Class-ID: EC000437 ETIM 6.0 Class-Description: Housing for industrial connectors
Material:	Housing: aluminium alloy, grey Lever: zinc-plated steel Sealing: NBR
Protection rating:	IP 65 (latched) NEMA 250, UL50E: 12, 4 (latched)
VDE-tested:	Certified production control: VDE-REG. no.: B437 UL-tested: UL File Number: E75770
Temperature range:	-40°C to +100°C, short-term up to +125°C

### Note

Photographs and graphics are not to scale and do not represent detailed images of the respective products.  
Prices are net prices without VAT and surcharges. Sale to business customers only.

**EPIC® H-A 10 TBFH-LB**

Article number	Article description	M	PG	Neck	Pieces / PU
H-A housing: cable coupler hood (straight cable entry, single lever, high version)					
70450400	H-A 10 TBFH-LB 21	-	21	yes	5
79450400	H-A 10 TBFH-LB M25	25	-	-	5