

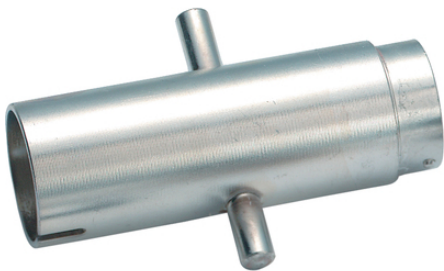
EPIC® SIGNAL R 3.0 Tools

Contacts, tools, accessories for circular connectors

EPIC® R3.0 circular connector tools

Info

Made in Germany



Technical Data

Classification ETIM 5:

ETIM 5.0 Class-ID: EC000168

ETIM 5.0 Class-Description: Crimp tool cable lugs, cable end sleeves, screen connection

Classification ETIM 6:

ETIM 6.0 Class-ID: EC000168

ETIM 6.0 Class-Description: Crimp tool cable lugs, cable end sleeves, screen connection

Note

Photographs and graphics are not to scale and do not represent detailed images of the respective products.
Prices are net prices without VAT and surcharges. Sale to business customers only.

EPIC® SIGNAL R 3.0 Tools

Article number	Article designation	For design	Pieces / PU
50200800	R3.0 assembly/disassembly tool	for type D, F	1