

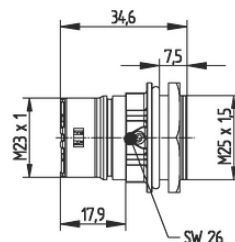
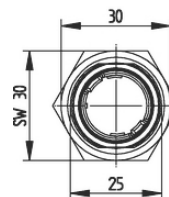
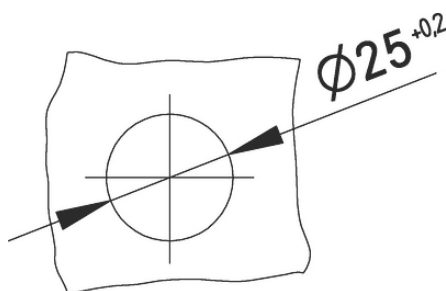
EPIC® SIGNAL M23 G5

Circular connectors for Servo Cables and encoders

EPIC® M23 panel base for bore hole

Info

Made in Germany



Mechanical and plant engineering



Wind Energy



Good chemical resistance



Robust



Interference signals

Benefits

Fast and easy assembly

Only one M25 bore hole necessary

Application range

Plant engineering

Servo drives and servo assemblies

Measurement and control technology

Technical Data

Classification ETIM 5:

ETIM 5.0 Class-ID: EC000437

Last Update (24.04.2024)

©2024 Lapp Group - Technical changes reserved

Product Management www.lappkabel.de

You can find the current technical data in the corresponding data sheet.

PN 0456 / 02_03.16

EPIC® SIGNAL M23 G5

Classification ETIM 6:	ETIM 5.0 Class-Description: Housing for industrial connectors ETIM 6.0 Class-ID: EC000437 ETIM 6.0 Class-Description: Housing for industrial connectors
Material:	Housing: nickel-plated zinc die-casting Sealing: FPM
Protection rating:	IP68 (10h/1m)
VDE-tested:	Certified production control: VDE-REG. no. C24 (according to EN 61984, SELV according to DIN VDE 0100-410 has to be guaranteed) UL File Number: E249137
Temperature range:	-25°C up to +125°C

Note

Photographs and graphics are not to scale and do not represent detailed images of the respective products.
Prices are net prices without VAT and surcharges. Sale to business customers only.

EPIC® SIGNAL M23 G5

Article number	Article	Coding	Fastening type	Pieces / PU
Type M23 G5 panel-mount box, front wall mounting				
44420046	M23 G5	black (N)	M25 x 1.5 (with nut)	5
44420045	M23 G5	black (N)	M25 x 1.5 (with nut)	20
44420048	M23 G5	red (+20°)	M25 x 1.5 (with nut)	5
44420047	M23 G5	red (+20°)	M25 x 1.5 (with nut)	20
44420044	M23 G5	blue (-20°)	M25 x 1.5 (with nut)	5
44420043	M23 G5	blue (-20°)	M25 x 1.5 (with nut)	20