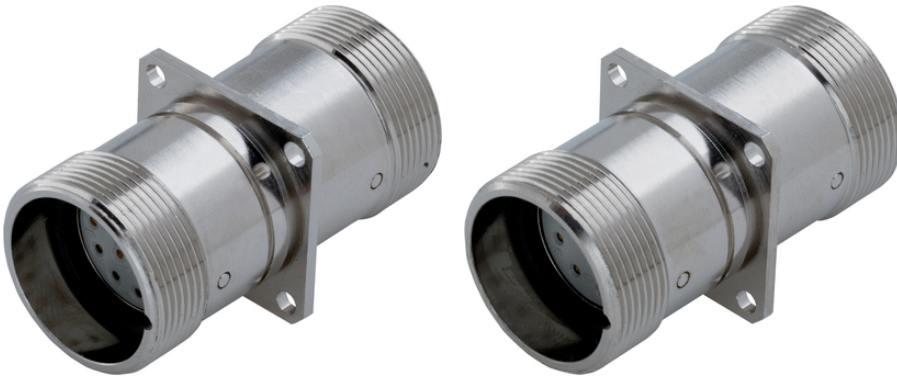


EPIC® SIGNAL M23 C2

Circular connectors for Servo Cables and encoders

EPIC® M23 Feed-through connector for connecting two M23 connectors



Mechanical and plant engineering



Wind Energy



Good chemical resistance



Robust



Interference signals

Benefits

Quick and easy separation of connection from both sides of a wall
For connecting two pre-assembled M23 D6 cable connectors

Application range

Plant engineering
Measurement and control technology

Technical Data

Classification ETIM 5:

ETIM 5.0 Class-ID: EC002635

ETIM 5.0 Class-Description: Circular connector (industrial connector)

Classification ETIM 6:

ETIM 6.0 Class-ID: EC002635

ETIM 6.0 Class-Description: Circular connector (industrial connector)

Material:

Housing: nickel-plated copper alloy

Insert: thermoplastic

Sealing: neoprene

Last Update (14.10.2019)

©2019 Lapp Group - Technical changes reserved

Product Management www.lappkabel.de

You can find the current technical data in the corresponding data sheet.

PN 0456 / 02_03.16

EPIC® SIGNAL M23 C2

Protection rating:	IP 67
Temperature range:	-25°C up to +125°C

Note

Photographs and graphics are not to scale and do not represent detailed images of the respective products. Prices are net prices without VAT and surcharges. Sale to business customers only.

EPIC® SIGNAL M23 C2

Article number	Article description	Version	Contacts included	Fastening type	Pin configuration	Pieces / PU
Type M23 C2 feed-through connector						
00010108	EPIC® M23 C2 12	black (N)	12	Ø 2.7 mm (4x)	12E male - 12P female	5
00010521	EPIC® M23 C2 17	black (N)	17	Ø 2.7 mm (4x)	17E male - 17P female	5

Last Update (14.10.2019)

©2019 Lapp Group - Technical changes reserved

Product Management www.lappkabel.de

You can find the current technical data in the corresponding data sheet.

PN 0456 / 02_03.16