

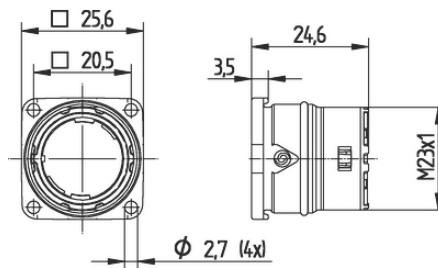
EPIC® SIGNAL M23 B2

Circular connectors for Servo Cables and encoders

EPIC® M23 panel base for back wall assembly

Info

Made in Germany



Mechanical and plant engineering



Wind Energy



Good chemical resistance



Robust



Interference signals

Benefits

Housings are very flexible - cable connectors with wide clamping range, receptacle housings for assembling the inserts from the front and rear

Harnessed insulation body can easily inserted from back side in already mounted housing

Application range

Plant engineering

Servo drives and servo assemblies

Measurement and control technology

Technical Data

Last Update (24.04.2024)

©2024 Lapp Group - Technical changes reserved

Product Management www.lappkabel.de

You can find the current technical data in the corresponding data sheet.

PN 0456 / 02_03.16

EPIC® SIGNAL M23 B2

| | |
|------------------------|--|
| Classification ETIM 5: | ETIM 5.0 Class-ID: EC000437 ETIM 5.0 Class-Description: Housing for industrial connectors |
| Classification ETIM 6: | ETIM 6.0 Class-ID: EC000437 ETIM 6.0 Class-Description: Housing for industrial connectors |
| Material: | Housing: nickel-plated zinc die-casting Sealing: FPM |
| Protection rating: | IP68 (10h/1m) |
| VDE-tested: | Certified production control: VDE-REG. no. C24 (according to EN 61984, SELV according to DIN VDE 0100-410 has to be guaranteed) UL File Number: E249137 |
| Temperature range: | -25°C up to +125°C |

Note

Photographs and graphics are not to scale and do not represent detailed images of the respective products.
Prices are net prices without VAT and surcharges. Sale to business customers only.

EPIC® SIGNAL M23 B2

| Article number | Article | Coding | Fastening type | Pieces / PU |
|---|---------|-------------|----------------|-------------|
| Type M23 B2 panel-mount box, rear wall mounting | | | | |
| 44420050 | M23 B2 | black (N) | Ø 2.7 mm (4x) | 5 |
| 44420051 | M23 B2 | black (N) | Ø 2.7 mm (4x) | 20 |
| 44420035 | M23 B2 | red (+20°) | Ø 2.7 mm (4x) | 5 |
| 44420049 | M23 B2 | red (+20°) | Ø 2.7 mm (4x) | 20 |
| 44420052 | M23 B2 | blue (-20°) | Ø 2.7 mm (4x) | 5 |
| 44420053 | M23 B2 | blue (-20°) | Ø 2.7 mm (4x) | 20 |

Last Update (24.04.2024)

©2024 Lapp Group - Technical changes reserved

Product Management www.lappkabel.de

You can find the current technical data in the corresponding data sheet.

PN 0456 / 02_03.16