

EPIC® SIGNAL M17 D6

Circular connectors for servomotors and power supply

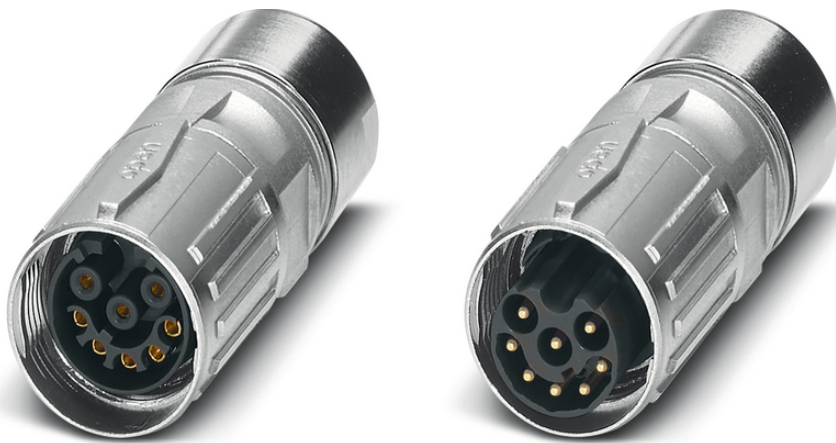
EPIC® M17 SIGNAL cable connector

Info

Connector for shielded data cables

The contacts have to be ordered separately

Made in Germany



Mechanical and plant engineering



Mechanical resistance



Optimum strain relief



Space requirement



Interference signals



Waterproof

Benefits

sensor/ ac

EMC protection

Application range

Feedback / signal cables

Technical Data

Classification ETIM 5:

ETIM 5.0 Class-ID: EC002635

ETIM 5.0 Class-Description: Circular connector (industrial connector)

Last Update (23.12.2022)

©2022 Lapp Group - Technical changes reserved

Product Management www.lappkabel.de

You can find the current technical data in the corresponding data sheet.

PN 0456 / 02_03.16

EPIC® SIGNAL M17 D6

Classification ETIM 6:	ETIM 6.0 Class-ID: EC002635 ETIM 6.0 Class-Description: Circular connector (industrial connector)
Rated voltage (V):	IEC: 48 V AC, 74 V DC
Rated impulse voltage:	1.5 kV
Rated current (A):	3.6 A
Pollution degree:	3
Contacts:	Gold-plated brass
Number of contacts:	Contacts: 8(1mm), 17(0.6mm)
Termination methods:	Crimp termination: 0.06 - 0.56 mm ² (0,6mm contacts) Crimp termination: 0.06 - 1.0 mm ² (1mm contacts)
Material:	Housing: nickel-plated zinc die-casting, nickel-plated brass Insert: PA, Seal: FPM
Protection rating:	IP 67
Cycle of mechanical operation:	100
Temperature range:	-40°C to +125°C

Note

Photographs and graphics are not to scale and do not represent detailed images of the respective products. Prices are net prices without VAT and surcharges. Sale to business customers only.

EPIC® SIGNAL M17 D6

Article number	Article description	Clamping range min	Clamping range max	Pin configuration	Pieces / PU
Type M17 D6, cable connector					
44423100	EPIC® M17 female	3.5	11	8	5
44423102	EPIC® M17 male	3.5	11	8	5
44423101	EPIC® M17 female	3.5	11	17	5
44423103	EPIC® M17 male	3.5	11	17	5

Last Update (23.12.2022)

©2022 Lapp Group - Technical changes reserved

Product Management www.lappkabel.de

You can find the current technical data in the corresponding data sheet.
PN 0456 / 02_03_16