

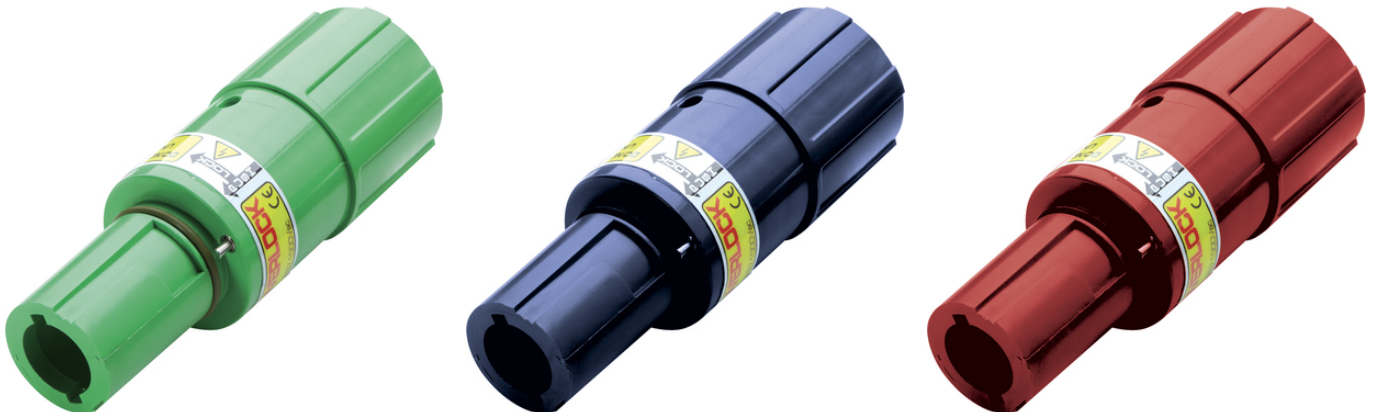
## EPIC® POWERLOCK F6 S

Single-pin circular connector for mobile power distribution, electro motors and generators

EPIC®POWERLOCK cable coupler drain 400A for screw connection up to 120mm<sup>2</sup>

### Info

Connector for unscreened single-core power cables



Waterproof



Reliability



Robust



Optimum strain relief



Wide clamping range

### Benefits

Resistant to mechanical influences in harsh environmental conditions

Connectors in harmonised colours according to European standards

Every colour has a different coding to prevent incorrect plugging

### Application range

For renewable energy plants e.g. wind power

For mobile and stationary power distribution

For the connection of motors, transformers and generators

Light & sound technology

Last Update (13.05.2024)

©2024 Lapp Group - Technical changes reserved

Product Management [www.lappkabel.de](http://www.lappkabel.de)

You can find the current technical data in the corresponding data sheet.

PN 0456 / 02\_03.16

## EPIC® POWERLOCK F6 S

### Product features

Straight connector with M40 thread  
Order SKINTOP® ST-M 40 or STR-M 40 separately  
Contact fixing by contact retention pin, each pin can only be used once  
Housing without contact, order contact separately

### Technical Data

Classification ETIM 5:	ETIM 5.0 Class-ID: EC000437 ETIM 5.0 Class-Description: Housing for industrial connectors
Classification ETIM 6:	ETIM 6.0 Class-ID: EC000437 ETIM 6.0 Class-Description: Housing for industrial connectors
Rated voltage (V):	1000 V
Rated impulse voltage:	8 kV
Rated current (A):	Screw max. 400 A
Pollution degree:	3
Contacts:	Screw termination: silver-plated brass
Number of contacts:	1
Termination methods:	Screw termination: 50 - 120 mm <sup>2</sup>
Material:	Housing: PBT Contact retention pin: PA
Protection rating:	IP 67 (maximum, dependant on cable gland used) IP 20 (unmated)
Cycle of mechanical operation:	500
VDE-tested:	VDE Reg. No. D42
Temperature range:	-25 °C up to +125 °C

### Note

Photographs and graphics are not to scale and do not represent detailed images of the respective products.  
Prices are net prices without VAT and surcharges. Sale to business customers only.

**EPIC® POWERLOCK F6 S**

Article number	Article description	M	Pin configuration
Cable coupler F6, drain			
44420262	POWERLOCK F6 PE/GN	40	PE, Green
44420263	POWERLOCK F6 N/BL	40	N, Blue
44420264	POWERLOCK F6 L1/BN	40	L1, Brown
44420265	POWERLOCK F6 L2/BK	40	L2, Black
44420266	POWERLOCK F6 L3/GY	40	L3, Grey
For direct current applications in conjunction with L2/black			
44420301	POWERLOCK F6 L1/RD	40	L1, Red

Last Update (13.05.2024)

©2024 Lapp Group - Technical changes reserved

Product Management [www.lappkabel.de](http://www.lappkabel.de)You can find the current technical data in the corresponding data sheet.  
PN 0456 / 02\_03\_16

## EPIC® POWERLOCK F6 S

