

## EPIC® POWERLOCK F6 C

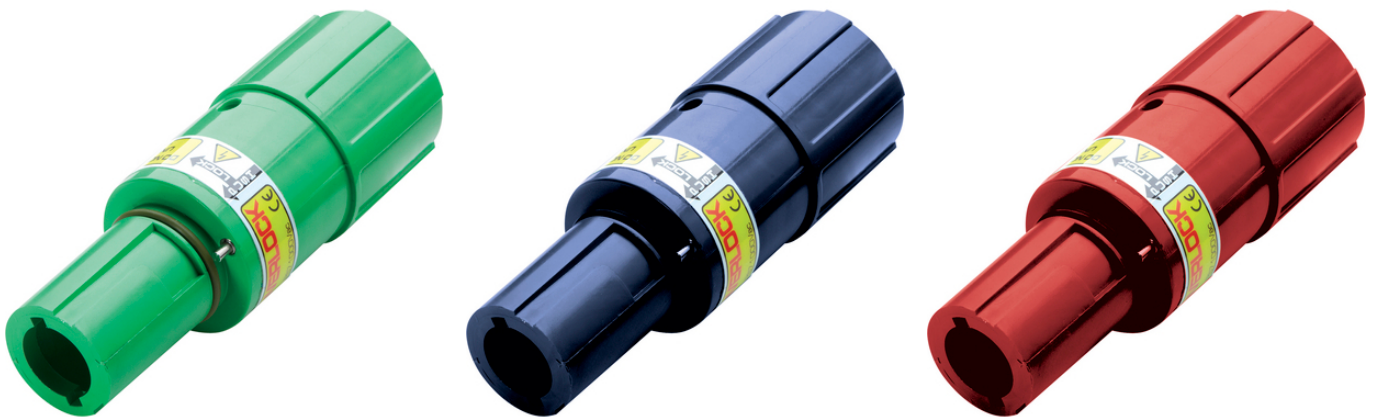
Single-pin circular connector for mobile power distribution, electro motors and generators

EPIC®POWERLOCK cable coupler drain 660A for crimp connection up to 240mm<sup>2</sup>

### Info

Connector for unscreened single-core power cables

Made in Europe



Wide clamping range



Optimum strain relief



Robust



Reliability



Waterproof

### Benefits

Resistant to mechanical influences in harsh environmental conditions

Connectors in harmonised colours according to European standards

Every colour has a different coding to prevent incorrect plugging

### Application range

For renewable energy plants e.g. wind power

For mobile and stationary power distribution

For the connection of motors, transformers and generators

Light & sound technology

Last Update (23.04.2024)

©2024 Lapp Group - Technical changes reserved

Product Management [www.lappkabel.de](http://www.lappkabel.de)

You can find the current technical data in the corresponding data sheet.

PN 0456 / 02\_03.16

## EPIC® POWERLOCK F6 C

### Product features

Straight connector with M40 thread

Order SKINTOP® ST-M 40 or STR-M 40 separately

Contact fixing by contact retention pin, each pin can only be used once

Housing without contact, order contact separately

### Technical Data

Classification ETIM 5:	ETIM 5.0 Class-ID: EC000437 ETIM 5.0 Class-Description: Housing for industrial connectors
Classification ETIM 6:	ETIM 6.0 Class-ID: EC000437 ETIM 6.0 Class-Description: Housing for industrial connectors
Rated voltage (V):	1000 V
Rated impulse voltage:	8 kV
Rated current (A):	Max. crimp 660 A
Pollution degree:	3
Contacts:	Crimp termination: copper, silver-plated
Number of contacts:	1
Termination methods:	Crimp termination: 35 - 240 mm <sup>2</sup>
Material:	Housing: PBT Contact retention pin: PA
Protection rating:	IP 67 (maximum, dependant on cable gland used) IP 20 (unmated)
Cycle of mechanical operation:	500
VDE-tested:	VDE Reg. No. D42
Temperature range:	-25 °C up to +125 °C

### Note

Photographs and graphics are not to scale and do not represent detailed images of the respective products.

Prices are net prices without VAT and surcharges. Sale to business customers only.

**EPIC® POWERLOCK F6 C**

Article number	Article description	M	Pin configuration	Pieces / PU
44420211	POWERLOCK F6 PE/GN	40	PE, Green	1
44420212	POWERLOCK F6 N/BL	40	N, Blue	1
44420213	POWERLOCK F6 L1/BN	40	L1, Brown	1
44420214	POWERLOCK F6 L2/BK	40	L2, Black	1
44420215	POWERLOCK F6 L3/GY	40	L3, Grey	1
For direct current applications in conjunction with L2/black				
44420318	POWERLOCK F6 L1/RD	40	L1, Red	1

Last Update (23.04.2024)

©2024 Lapp Group - Technical changes reserved

Product Management [www.lappkabel.de](http://www.lappkabel.de)

You can find the current technical data in the corresponding data sheet.

PN 0456 / 02\_03.16

**EPIC® POWERLOCK F6 C**

Last Update (23.04.2024)

©2024 Lapp Group - Technical changes reserved

Product Management [www.lappkabel.de](http://www.lappkabel.de)

You can find the current technical data in the corresponding data sheet.

PN 0456 / 02\_03.16

**EPIC® POWERLOCK F6 C**