

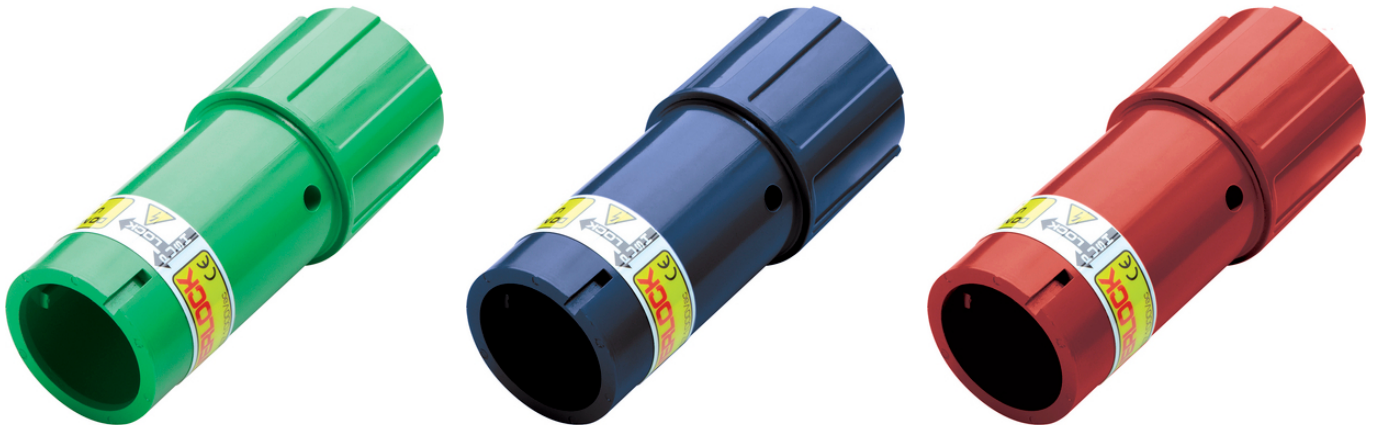
EPIC® POWERLOCK D6 C

Single-pin circular connector for mobile power distribution, electro motors and generators

EPIC®POWERLOCK cable connector source 660A for crimp connection up to 240mm²

Info

Made in Europe



Wide clamping range



Optimum strain relief



Robust



Reliability



Waterproof

Benefits

Resistant to mechanical influences in harsh environmental conditions

Connectors in harmonised colours according to European standards

Every colour has a different coding to prevent incorrect plugging

Application range

For renewable energy plants e.g. wind power

For mobile and stationary power distribution

For the connection of motors, transformers and generators

Light & sound technology

Last Update (28.02.2024)

©2024 Lapp Group - Technical changes reserved

Product Management www.lappkabel.de

You can find the current technical data in the corresponding data sheet.

PN 0456 / 02_03.16

EPIC® POWERLOCK D6 C

Product features

Straight connector with M40 thread

Order SKINTOP® ST-M 40 or STR-M 40 separately

Contact fixing by contact retention pin, each pin can only be used once

Housing without contact, order contact separately

Technical Data

Classification ETIM 5:	ETIM 5.0 Class-ID: EC000437 ETIM 5.0 Class-Description: Housing for industrial connectors
Classification ETIM 6:	ETIM 6.0 Class-ID: EC000437 ETIM 6.0 Class-Description: Housing for industrial connectors
Rated voltage (V):	1000 V
Rated impulse voltage:	8 kV
Rated current (A):	Max. crimp 660 A
Pollution degree:	3
Contacts:	Crimp termination: copper, silver-plated
Number of contacts:	1
Termination methods:	Crimp termination: 35 - 240 mm ²
Material:	Housing: PBT Contact retention pin: PA
Protection rating:	IP 67 (maximum, dependant on cable gland used) IP 20 (unmated)
Cycle of mechanical operation:	500
VDE-tested:	VDE Reg. No. D42
Temperature range:	-25 °C up to +125 °C

Note

Photographs and graphics are not to scale and do not represent detailed images of the respective products.

Prices are net prices without VAT and surcharges. Sale to business customers only.

EPIC® POWERLOCK D6 C

Article number	Article description	M	Pin configuration	Pieces / PU
44420216	POWERLOCK D6 PE/GN	40	PE, Green	1
44420217	POWERLOCK D6 N/BL	40	N, Blue	1
44420218	POWERLOCK D6 L1/BN	40	L1, Brown	1
44420219	POWERLOCK D6 L2/BK	40	L2, Black	1
44420220	POWERLOCK D6 L3/GY	40	L3, Grey	1
For direct current applications in conjunction with L2/black				
44420319	POWERLOCK D6 L1/RD	40	L1, Red	1

Last Update (28.02.2024)

©2024 Lapp Group - Technical changes reserved

Product Management www.lappkabel.de

You can find the current technical data in the corresponding data sheet.

PN 0456 / 02_03_16

EPIC® POWERLOCK D6 C

Last Update (28.02.2024)

©2024 Lapp Group - Technical changes reserved

Product Management www.lappkabel.de

You can find the current technical data in the corresponding data sheet.

PN 0456 / 02_03.16

EPIC® POWERLOCK D6 C