

EPIC® POWER LS3 male contacts

Contacts, tools, accessories for circular connectors

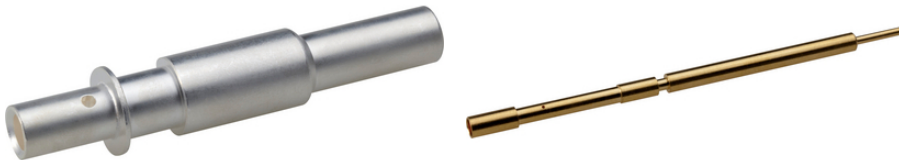
EPIC® POWER LS3 male contacts for size 3 circular connector series

Info

Only available as crimp version due to the high mechanical stress in servo applications

Power contacts silver plated, signal contacts gold plated

Made in Germany



Mechanical resistance



Optimum strain relief



Reliability

Technical Data

Classification ETIM 5:

ETIM 5.0 Class-ID: EC000796

ETIM 5.0 Class-Description: Contact for industrial connectors

Classification ETIM 6:

ETIM 6.0 Class-ID: EC000796

ETIM 6.0 Class-Description: Contact for industrial connectors

Note

Photographs and graphics are not to scale and do not represent detailed images of the respective products.

Prices are net prices without VAT and surcharges. Sale to business customers only.

EPIC® POWER LS3 male contacts

Article number	Article designation	Version	For design	Pieces / PU
EPIC® POWER LS3 male contacts				
44429360	LS3 A, F SCEM 10MM AG 10	10 mm male 10 mm ²	for type A1, F6	4
44429361	LS3 A, F SCEM 10MM AG 16	10 mm male 16 mm ²	for type A1, F6	4
44429362	LS3 A, F SCEM 10MM AG 25	10 mm male 25 mm ²	for type A1, F6	4
44429363	LS3 A, F SCEM 10MM AG 35	10 mm male 35 mm ²	for type A1, F6	4
44429364	LS3 A, F SCEM 10MM AG 50	10 mm male 50 mm ²	for type A1, F6	4
44429365	LS3 A, F SCEM 1.6MM AU 0.75-1.5	1.6 mm male 0.75 - 1.5 mm ²	for type A1, F6	4

Last Update (22.02.2024)

©2024 Lapp Group - Technical changes reserved

Product Management www.lappkabel.de

You can find the current technical data in the corresponding data sheet.

PN 0456 / 02_03_16