

## EPIC® POWER LS1 A3

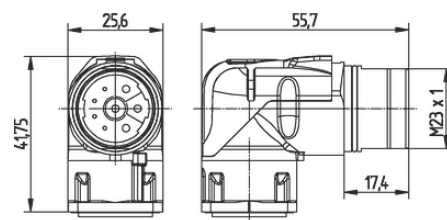
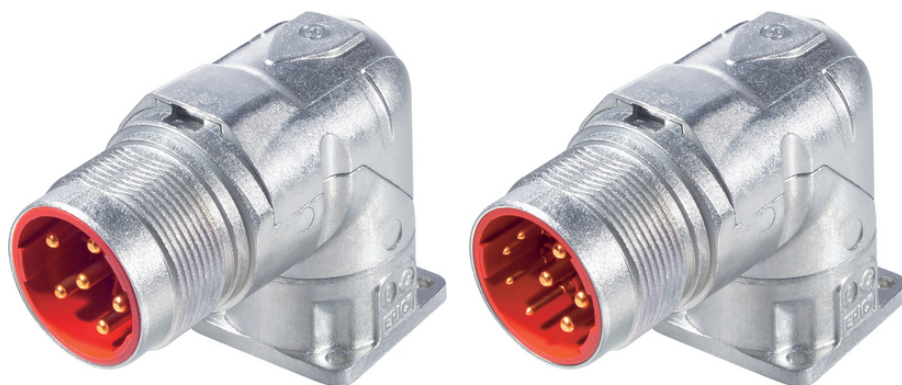
Circular connectors for servomotors and power supply

EPIC® LS1 for male contacts angled, swivel

### Info

Rotateable with clearly defined adjustment positions

Made in Germany



Mechanical and plant engineering



Wind Energy



Good chemical resistance



Corrosion-resistant



Maximum vibration protection



Mechanical resistance



Assembly time



Space requirement



Robust

Last Update (29.12.2023)

©2023 Lapp Group - Technical changes reserved

Product Management [www.lappkabel.de](http://www.lappkabel.de)

You can find the current technical data in the corresponding data sheet.

PN 0456 / 02\_03.16

## EPIC® POWER LS1 A3



Interference signals



Waterproof



Variety of approval certifications

### Benefits

High power at smallest installation space, Optimal solution for electric motors

EMC-optimised design

Safety use in field environment by high protection class

### Application range

Plant engineering

Servo drives and servo assemblies

### Technical Data

Classification ETIM 5:	ETIM 5.0 Class-ID: EC002635 ETIM 5.0 Class-Description: Circular connector (industrial connector)
Classification ETIM 6:	ETIM 6.0 Class-ID: EC002635 ETIM 6.0 Class-Description: Circular connector (industrial connector)
Rated voltage (V):	630 V (2 mm contacts) 250 V (1 mm contacts)
Rated impulse voltage:	6 kV (2 mm contacts) 4 kV (1 mm contacts)
Rated current (A):	26A/3+PE+4, 25A/5+PE (2mm contacts) 7 A (1 mm contacts)
Pollution degree:	3
Contact resistance:	< 4 mOhm
Contacts:	Gold-plated brass
Number of contacts:	3+PE+4(2mm/1mm) 5+PE(2mm)
Termination methods:	Crimp termination: 0.5 - 2.5 mm <sup>2</sup> (2 mm contacts) Crimp termination: 0.14 - 1.0 mm <sup>2</sup> (1 mm contacts)
Material:	Housing: nickel-plated zinc die-casting, nickel-plated brass Insert: PA, Seal: FPM
Protection rating:	IP 65
Cycle of mechanical operation:	500
VDE-tested:	UL File Number: E249137
Temperature range:	-25°C up to +125°C

### Note

Last Update (29.12.2023)

©2023 Lapp Group - Technical changes reserved

Product Management [www.lappkabel.de](http://www.lappkabel.de)

You can find the current technical data in the corresponding data sheet.

PN 0456 / 02\_03.16

## EPIC® POWER LS1 A3

Photographs and graphics are not to scale and do not represent detailed images of the respective products.  
Prices are net prices without VAT and surcharges. Sale to business customers only.

**EPIC® POWER LS1 A3**

Article number	Article description	Contacts included	Clamping range in mm	Fastening type	Pin configuration	Pieces / PU
Type LS1 A3, angled, rotatable, 6-pin, for male contacts						
24420058	LS1 A3	6	-	Ø 2.7 mm (4x)	5+PE	5
24420059	LS1 A3	-	-	Ø 2.7 mm (4x)	5+PE	20
Type LS1 A3, angled, rotatable, 8-pin, for male contacts						
24420056	LS1 A3	8	-	Ø 2.7 mm (4x)	3+PE+4	5
24420057	LS1 A3	-	-	Ø 2.7 mm (4x)	3+PE+4	20

Last Update (29.12.2023)

©2023 Lapp Group - Technical changes reserved

Product Management [www.lappkabel.de](http://www.lappkabel.de)You can find the current technical data in the corresponding data sheet.  
PN 0456 / 02\_03.16