

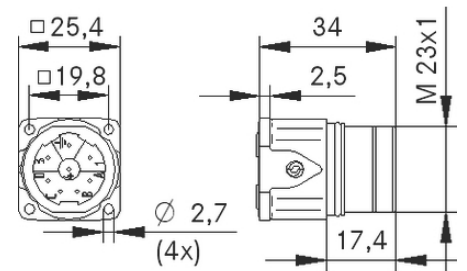
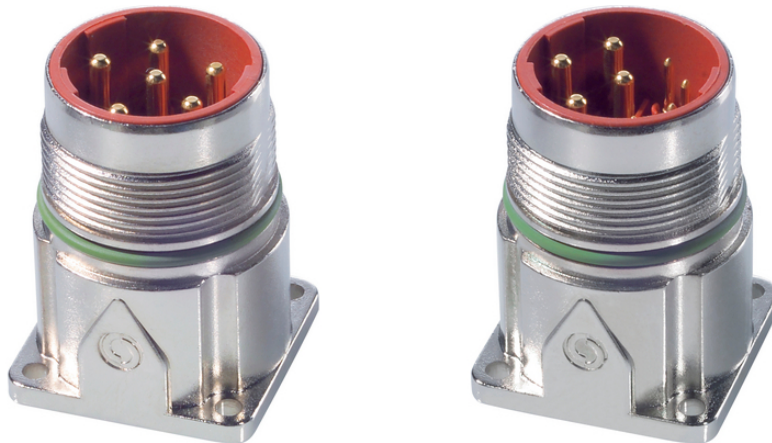
EPIC® POWER LS1 A1

Circular connectors for servomotors and power supply

EPIC® LS1 Power connector panel base for front wall assembly

Info

Made in Germany



Mechanical and plant engineering



Wind Energy



Good chemical resistance



Corrosion-resistant



Maximum vibration protection



Mechanical resistance



Assembly time



Space requirement



Robust

Last Update (23.04.2024)

©2024 Lapp Group - Technical changes reserved

Product Management www.lappkabel.de

You can find the current technical data in the corresponding data sheet.

PN 0456 / 02_03.16

EPIC® POWER LS1 A1



Interference signals



Waterproof



Variety of approval certifications

Benefits

High power at smallest installation space, Optimal solution for electric motors

EMC-optimised design

Safety use in field environment by high protection class

Application range

Plant engineering

Servo drives and servo assemblies

Technical Data

Classification ETIM 5:	ETIM 5.0 Class-ID: EC002635 ETIM 5.0 Class-Description: Circular connector (industrial connector)
Classification ETIM 6:	ETIM 6.0 Class-ID: EC002635 ETIM 6.0 Class-Description: Circular connector (industrial connector)
Rated voltage (V):	630 V (2 mm contacts) 250 V (1 mm contacts)
Rated impulse voltage:	6 kV (2 mm contacts) 4 kV (1 mm contacts)
Rated current (A):	26A/3+PE+4, 25A/5+PE (2mm contacts) 7 A (1 mm contacts)
Pollution degree:	3
Contact resistance:	< 4 mOhm
Contacts:	Gold-plated brass
Number of contacts:	3+PE+4(2mm/1mm) 5+PE(2mm)
Termination methods:	Crimp termination: 0.5 - 2.5 mm ² (2 mm contacts) Crimp termination: 0.14 - 1.0 mm ² (1 mm contacts)
Material:	Housing: nickel-plated zinc die-casting, nickel-plated brass Insert: PA, Seal: FPM
Protection rating:	IP68 (10h/1m)
Cycle of mechanical operation:	500
VDE-tested:	Certified production control: VDE-REG. no. B25 UL File Number: E249137
Temperature range:	-25°C up to +125°C

EPIC® POWER LS1 A1

Note

Photographs and graphics are not to scale and do not represent detailed images of the respective products.
Prices are net prices without VAT and surcharges. Sale to business customers only.

EPIC® POWER LS1 A1

Article number	Article description	Contacts included	Clamping range in mm	Fastening type	Pin configuration	Pieces / PU
Type LS1 A1, front wall mounting, 6-pin, for male contacts						
76003000	LS1 A1	6	-	Ø 2.7 mm (4x)	5+PE	5
76003510	LS1 A1	-	-	Ø 2.7 mm (4x)	5+PE	20
Type LS1 A1, front wall mounting, 8-pin, for male contacts						
76004000	LS1 A1	8	-	Ø 2.7 mm (4x)	3+PE+4	5
76004510	LS1 A1	-	-	Ø 2.7 mm (4x)	3+PE+4	20

Last Update (23.04.2024)

©2024 Lapp Group - Technical changes reserved

Product Management www.lappkabel.de

You can find the current technical data in the corresponding data sheet.

PN 0456 / 02_03.16