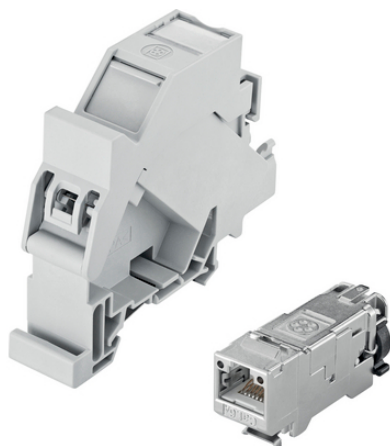


## EPIC® DATA HS RJ45F Cat.6A

Rail mount adapter with RJ45 coupler

The mounting rail adapter is suitable for use on industrial premises. It ensures integrated strain relief for cables with an outer diameter of up to 9 mm.



Supplementary automation components from Lapp



Mechanical and plant engineering



Space requirement



Interference signals

### Product features

Plastic housing including RJ45 coupler

Suitable for use in industrial applications

Colour: light grey (RAL 7035)

Suitable for stranded cores with AWG27/7 -22/7 and for solid conductors with AWG26/1 - 22/1

### Norm references / Approvals

RJ45 according to IEC 60603-7-51

### Technical Data

Classification ETIM 5:

ETIM 5.0 Class-ID: EC001121

ETIM 5.0 Class-Description: Modular connector

Classification ETIM 6:

ETIM 6.0 Class-ID: EC001121

ETIM 6.0 Class-Description: Modular connector

Protection rating:

IP 20

Ambient temperature (operation):

-40 °C to +70 °C

Last Update (31.12.2023)

©2023 Lapp Group - Technical changes reserved

Product Management [www.lappkabel.de](http://www.lappkabel.de)

You can find the current technical data in the corresponding data sheet.

PN 0456 / 02\_03.16

## EPIC® DATA HS RJ45F Cat.6A

### Note

Photographs and graphics are not to scale and do not represent detailed images of the respective products.  
Prices are net prices without VAT and surcharges. Sale to business customers only.

**EPIC® DATA HS RJ45F Cat.6A**

Article number	Article designation
DIN-rail adapter containing RJ45 socket acc. to T568A (article 21700611)	
21700613	EPIC DATA HS RJ45 F 10G A
DIN-rail adapter containing RJ45 socket acc. to T568B (article 21700612)	
21700614	EPIC DATA HS RJ45 F 10G B

Last Update (31.12.2023)

©2023 Lapp Group - Technical changes reserved

Product Management [www.lappkabel.de](http://www.lappkabel.de)

You can find the current technical data in the corresponding data sheet.

PN 0456 / 02\_03.16