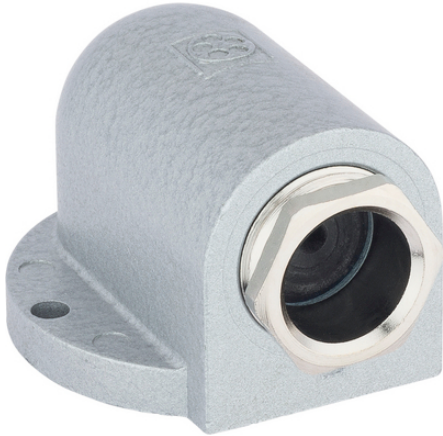


## SKINDICHT® SE-M

SKINDICHT® SE-M, angular cable outlet, incised sealing ring as a seal, for missing connection thread and high mechanical load



Corrosion-resistant



Mechanical resistance



Space requirement



Connector with standard housing unit



Temperature-resistant

### Benefits

Sealed by incised sealing ring  
Corrosion-resistant  
Easy to install  
Completely safe cable entry  
Low overall height

### Application range

For high mechanical stress  
When no connection thread is provided

### Product Make-up

M20 x 1.5 - M25 x 1.5 with 2 screw holes  
M32 x 1.5 with 4 screw holes  
With incised sealing ring

## SKINDICHT® SE-M

### Technical Data

Classification ETIM 5:	ETIM 5.0 Class-ID: EC000441 ETIM 5.0 Class-Description: Cable screw gland
Classification ETIM 6:	ETIM 6.0 Class-ID: EC000441 ETIM 6.0 Class-Description: Cable screw gland
Material:	Body: zinc die-casting, grey, hammer tone finish Compression screw: nickel-plated brass Incised sealing ring: CR/NBR O-ring: NBR
Protection rating:	IP 55
Temperature range:	-20 °C to +80 °C

### Note

Photographs and graphics are not to scale and do not represent detailed images of the respective products.  
Prices are net prices without VAT and surcharges. Sale to business customers only.

**SKINDICHT® SE-M**

Article number	Article designation / size	Incised sealing ring ØF (mm)	Overall height (mm)	SW wrench size mm	Overall length C mm	Overall width (mm)	Pieces / PU
SKINDICHT® SE-M							
52108000	M 20 x 1,5	4/7/10/13	31	20	49.2	42.0	10
52108010	M 25 x 1,5	8.5/11.5/14.5/17.5	40	25	68.2	60.0	5
52108020	M 32 x 1,5	16/19/22/25	51.5	32	84.2	66.0	1