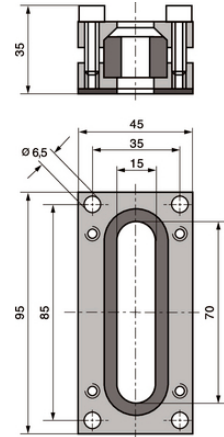
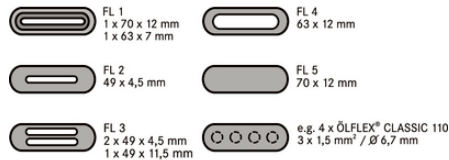
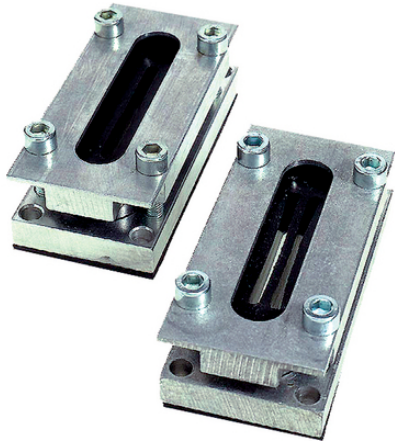


SKINDICHT® FL

SKINDICHT® FL, flat cable gland with internal conical contour, cable flange can be used universally mainly for large flat cables



Robust

Benefits

The seal profiles enable many problems to be solved

Several flat and round cables can be fed through at the same time

Through the internal conical contour in the upper part of the housing, the sealing inserts are pressed onto the cable

Application range

Cable flange that can be used universally, mainly for large flat cables.

Lifts

Conveyor systems

Crane and conveying machinery

Power chains

Note

When assembled professionally and properly, the protection class of IP 65 can be reached

For suitable flat cables, refer to ÖLFLEX® LIFT F for indoor applications or ÖLFLEX® CRANE F for outdoor applications

Technical Data

Classification ETIM 5:

ETIM 5.0 Class-ID: EC000441

ETIM 5.0 Class-Description: Cable screw gland

Classification ETIM 6:

ETIM 6.0 Class-ID: EC000441

ETIM 6.0 Class-Description: Cable screw gland

Material:

Body: aluminium, special untreated alloy

Screws and spring washers: zinc-plated steel

Seal: NBR

Protection rating:

IP 65

Temperature range:

-20 °C to +100 °C

Last Update (24.04.2024)

©2024 Lapp Group - Technical changes reserved

Product Management www.lappkabel.de

You can find the current technical data in the corresponding data sheet.

PN 0456 / 02_03.16

SKINDICHT® FL

Note

Photographs and graphics are not to scale and do not represent detailed images of the respective products.
Prices are net prices without VAT and surcharges. Sale to business customers only.

SKINDICHT® FL

Article number	Article designation / size	Cable pass length x width in mm	Dimensions: L x W x H (mm)	Pieces / PU
SKINDICHT® FL				
52008010	FL 1	70 x 12 + 63 x 7	45.0 x 35.0 x 95.0	1
52008020	FL 2	49 x 4,5	45.0 x 35.0 x 95.0	1
52008030	FL 3	49 x 4,5 + 49 x 4,5 (49 x 11,5)	45.0 x 35.0 x 95.0	1
52008040	FL 4	63 x 12,0 (+0,2)	45.0 x 35.0 x 95.0	1
52008050	FL 5	70 x 12	45.0 x 35.0 x 95.0	1

Last Update (24.04.2024)

©2024 Lapp Group - Technical changes reserved

Product Management www.lappkabel.de

You can find the current technical data in the corresponding data sheet.

PN 0456 / 02_03_16