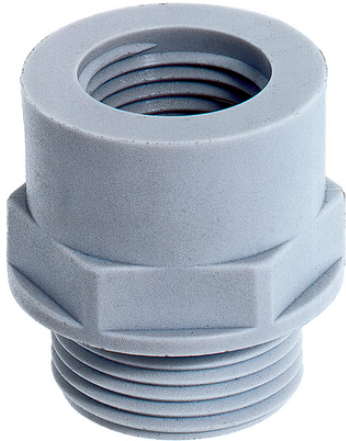


SKINDICHT® EKU

SKINDICHT® EKU, polyamide, glass fibre-reinforced enlargers with PG connection thread, with supporting surface for spanner



Space requirement

Benefits

Enables the use of cable glands with larger connection threads than the existing threaded holes
Assembling with a wrench
Supporting surface for spanner means scratches on the housing are avoided

Application range

Machines
Devices
Housings

Product Make-up

PG connection thread
First digit: external thread
Second digit: internal thread

Technical Data

Classification ETIM 5:	ETIM 5.0 Class-ID: EC000441 ETIM 5.0 Class-Description: Cable screw gland
Classification ETIM 6:	ETIM 6.0 Class-ID: EC000441 ETIM 6.0 Class-Description: Cable screw gland
Colour delivered:	Light grey (RAL 7035)
Material:	Polyamide, glass fibre-reinforced
Temperature range:	-40°C to +100°C

Note

Photographs and graphics are not to scale and do not represent detailed images of the respective products.
Prices are net prices without VAT and surcharges. Sale to business customers only.

SKINDICHT® EKU

Article number	Article designation / size	Pieces / PU
SKINDICHT® EKU		
52025200	EKU 7/9	100
51731000	EKU 9/11	100
51731010	EKU 11/13,5	100
51731020	EKU 13,5/16	100
51731030	EKU 16/21	50
51731040	EKU 21/29	25
52025210	EKU 29/36	25
52025220	EKU 36/42	25
52025230	EKU 42/48	25

Last Update (1.05.2024)

©2024 Lapp Group - Technical changes reserved

Product Management www.lappkabel.de

You can find the current technical data in the corresponding data sheet.

PN 0456 / 02_03.16