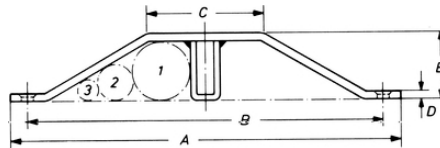


## ST steel cable tunnel

Lapp Group offers robust ST cable ducts made of steel which protects cables against mechanical influences.



Flame-retardant



Halogen-free



Mechanical resistance

### Benefits

A central strength element strengthens and stiffens the design

Point loads are thus distributed onto the floor

The ST cable tunnel offers additional advantages in the area of building safety as it is flame-retardant and halogen-free.

### Application range

Protects cables laid on the ground against mechanical influences

Can be fixed onto the floor by using countersunk screws

### Product Make-up

ST 1: A = 250, B = 230, C = 70, D = 5, E = 45

Material thickness: 5 mm

ST 2: A = 200, B = 182, C = 60, D = 4, E = 34,

ST 3: A = 150, B = 134, C = 60, D = 4, E = 24, hole diameter = 6.6 mm

### Technical Data

Classification ETIM 5:

ETIM 5.0 Class-ID: EC000047

ETIM 5.0 Class-Description: Cable tray/wide span cable tray

Classification ETIM 6:

ETIM 6.0 Class-ID: EC000047

ETIM 6.0 Class-Description: Cable tray/wide span cable tray

Note:

Max. loading capacity: 7 t

Material:

Steel, galvanized

Fireproof

Last Update (01.05.2024)

©2024 Lapp Group - Technical changes reserved

Product Management [www.lappkabel.de](http://www.lappkabel.de)

You can find the current technical data in the corresponding data sheet.

PN 0456 / 02\_03.16

## ST steel cable tunnel

### Note

Photographs and graphics are not to scale and do not represent detailed images of the respective products.  
Prices are net prices without VAT and surcharges. Sale to business customers only.

## ST steel cable tunnel

Article number	Article description	Length (mm)	Ø combinations (mm)	Weight (kg/piece)	Pieces / PU
61717000	ST 1	1000	36/25/15 or 40/24	14	1
61717040	ST 2	1000	25/20 or 30/18	9	1
61717070	ST 3	1000	17/14 or 20/13	7	1