

## EPIC® MH BUS

High flexibility by the use of any combination of inserts in one connector

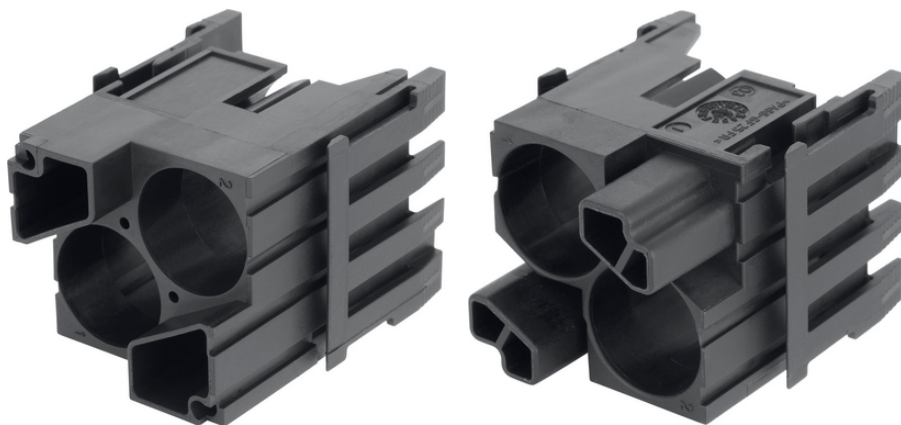
EPIC® MH BUS, Module for 2 x 4 shielded contacts

### Info

Modular connector system, plugable with the market standard

Shielded modul for data and signal transmission.

Usable for Ethernet CAT.5e



Supplementary automation components from Lapp



Mechanical and plant engineering



Rail



Wind Energy

### Benefits

Shielded modul for data and signal transmission.

Usable for Ethernet CAT.5e

EPIC® MH system is mateable with the market standard

Crimp connection for permanent vibration proof contacting

The mix of different functions in one plug guarantees high flexibility

Railway applications

- Fire protection on railway vehicles: Test according EN 45545-2. Requirement sets R22 and R23. Hazard level HL1, HL2 and HL3

### Application range

Mechanical engineering

Robotics industry

Plant engineering

Renewable energy

Last Update (24.04.2024)

©2024 Lapp Group - Technical changes reserved

Product Management [www.lappkabel.de](http://www.lappkabel.de)

You can find the current technical data in the corresponding data sheet.

PN 0456 / 02\_03.16

## EPIC® MH BUS

Railway applications / vehicle construction

### Technical Data

Classification ETIM 5:	ETIM 5.0 Class-ID: EC002641 ETIM 5.0 Class-Description: Modular connector (industrial connector)
Classification ETIM 6:	ETIM 6.0 Class-ID: EC002641 ETIM 6.0 Class-Description: Modular connector (industrial connector)
Rated voltage (V):	50
Rated impulse voltage:	0,8 kV
Rated current (A):	10
Pollution degree:	3
Flammability:	UL94 V-0
Termination methods:	Crimp termination: 0.14 - 2.5 mm <sup>2</sup>
Material:	PA
Cycle of mechanical operation:	500
Certifications:	UL-tested: UL File Number: E75770
Temperature range:	-40°C to +125°C

### Note

Photographs and graphics are not to scale and do not represent detailed images of the respective products.  
Prices are net prices without VAT and surcharges. Sale to business customers only.

**EPIC® MH BUS**

Article number	Article description	Contact type	Number of operating contacts	Slots	Pieces / PU
EPIC® MH BUS					
44423228	EPIC® MHS Bus	male	2	2	10
44423230	EPIC® MHB Bus	female	2	2	10